

10kV bus secondary voltage



10kV bus secondary voltage



See page 8/86 Note: NEOZED adapter sleeves or DIAZED screw adapters are required for NEOZED and DIAZED bus-mounting fuse bases.



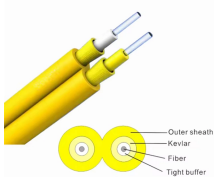
Built for voltage classes from 5 to 38 kV, these rugged enclosures simplify layout planning, support expansion, and preserve the system integrity that mission critical projects require.



Medium-Voltage Switchgear Smart Infrastructure combines the real and digital worlds across energy systems, buildings and industries, enhancing the way people live and work and significantly ...



The invention relates to the technical field of electric power, in particular to a method for checking the wiring of a secondary circuit of a 10kV bus voltage transformer.



The invention discloses a 10kV busbar voltage optimization method, system and medium that can improve the voltage qualification rate of a distribution network.



The secondary winding is made of heavy enameled copper wire. The secondary windings are evenly distributed around the core for maximum accuracy and resistance to stray fields from adjacent ...



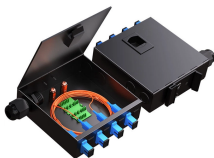
Utilities may have some control over and access to the energy stored in electric vehicles attached to the grid.



But technically the 10KV gear isn't a separately derived source (SDS) and doesn't technically require a GEC, just a ground. Should I provide a separate ground conductor for the 10kv ...



The dielectric strength is verified by testing the switchgear with rated values of short-duration power-frequency withstand voltage and lightning impulse withstand voltage according to IEC 62271-1.



The optimal bus voltage should be analyzed for each design case because of the dependent relationship between the constant power losses, the voltage/current-dependent power losses, and the selected ...

Contact Us

For more information, pricing, or custom solutions, please contact us:

Website: <https://indzawo.co.za>

Email: sales@indzawo.co.za

Phone: +27 71 296 8473

Address: 22 Quantum Street, Midrand, 1685, Gauteng, South Africa

This document is for informational purposes only. Specifications subject to change without notice.

