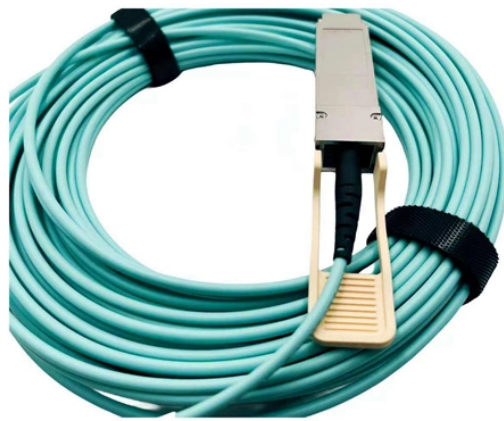


# **12-core optical cable connection tray**



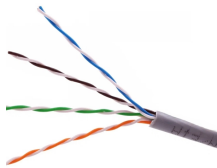
## 12-core optical cable connection tray



FYBOPTWU-12 Singlemode 12 Port SC-UPC Fiber Optic Rack Mount Enclosure Box & Splice Trays Fiber Cables Kit (Include Pigtail & Couplers), 12 Core LGX Loaded Patch Panel Box fits for 19" ...



With its 12 - core design, it can manage multiple fiber connections. It is easy to install and maintain, suitable for various optical distribution scenarios. It enhances the overall performance of the fiber ...



Each tray provides space for mounting fiber splice protectors and excess fiber. The cables are left in the splice tray. The splice tray offers a unique and flexible splice and storage system.



This splice tray is specifically engineered for use in rack mount and wall mount terminal boxes, as well as splice closures, offering excellent cable management capabilities.



Supports 12-core fiber termination, fusion splicing, and distribution in one integrated tray, maximizing fiber management efficiency and reducing on-site installation time.



The 12 cores plastic fiber optic distribution box provides a protected connection point for the feeder cable and drop cable in FTTH and FTTx networks. It integrates optical fibre splicing, splitting, distribution, ...



A005 12 cores Fiber Optic Splice Tray for Fiber Optic Termination Box and Fiber Optic Distribution Box Add to cart



The 12 core fiber optic splice trays are white colors and black colors optional, with same size and high quality. We have stock of this fiber tray for fast delivery.



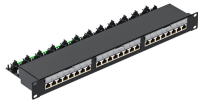
Each tray provides space for mounting fiber splice protectors and ...



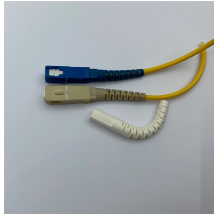
Each 12 Core Fiber Optic Tray provides space for mounting fiber splice protectors and excess fiber. 12 Core Fiber Optic Tray's divided into common splice tray, module integration and splitter tray.



The fiber tray provided by OTRANS has the characteristics of small size, light weight, beautiful appearance, compact structure, convenient fiber welding and connection, and can perfectly protect ...



With its 12 - core design, it can manage multiple fiber connections. It is easy to ...



FYBOPTWU-12 Singlemode 12 Port SC-UPC Fiber Optic Rack Mount Enclosure Box & Splice Trays Fiber Cables Kit (Include Pigtail & Couplers), 12 Core LGX ...

## Contact Us

For more information, pricing, or custom solutions, please contact us:

Website: <https://indzawo.co.za>

Email: [sales@indzawo.co.za](mailto:sales@indzawo.co.za)

Phone: +27 71 296 8473

Address: 22 Quantum Street, Midrand, 1685, Gauteng, South Africa

This document is for informational purposes only. Specifications subject to change without notice.

