

12-core optical cable laying rack



12-core optical cable laying rack



An Optical Distribution Frame (ODF) 12C 1U is a compact, rack-mounted unit designed for organizing and managing fiber optic connections in a network. The "12C" signifies a 12-count configuration, ...



Our main product is Fiber Optic Connector, Fiber Optic Adapter, Fiber Optic Attenuator, Fiber Optic Patch Cord and Fiber Terminal Box. Except that, we have very good prices for part of fiber tools!



With an operating wavelength range of 1310nm to 1550nm and supporting G.652D fiber grade, it features a minimum bending radius of 15mm, ensuring compatibility with a wide variety of fiber optic ...



FYBOPTWU-12 Singlemode 12 Port SC-UPC Fiber Optic Rack Mount Enclosure Box & Splice Trays Fiber Cables Kit (Include Pigtail & Couplers), 12 Core LGX Loaded Patch Panel Box fits for 19" ...



Product description: Fiber patch panel 19" 1U 24port ODF with SC LC FC ST Fiber adapter and pigtail accessories, It is removable front panels chassis is a 19 inch 1U sliding panel in two parts: one sliding ...



Ftth rack mount fiber optic distribution frame, other called fiber optical patch panel is designed to distribute, manage and protect fiber cores during telecommunication networks, in CATV equipment ...



It includes the metallic casing, adapter plate, splice tray and other necessary materials for the termination of optical fiber cable. Separate storage shelf and distribution shelf can be offered if required.



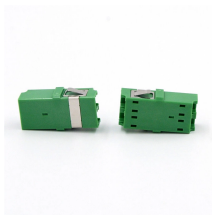
With a maximum capacity of 12 cores and the ability to accommodate 3 pieces of 8-13mm cables, it provides ample space for your connectivity needs. What sets it apart is the innovative design that ...



FYBOPTWU-12 Singlemode 12 Port SC-UPC Fiber Optic Rack Mount Enclosure ...



It is available for the distribution and terminal connection of various kinds of optical fiber system. These units are available in sizes that fit the most common distribution requirements.



This 1U fiber patch panel offers excellent fiber termination and patching management, making it ideal for optical cable distribution and terminal connections. It is typically installed in 19" or 23" server racks.

Contact Us

For more information, pricing, or custom solutions, please contact us:

Website: <https://indzawo.co.za>

Email: sales@indzawo.co.za

Phone: +27 71 296 8473

Address: 22 Quantum Street, Midrand, 1685, Gauteng, South Africa

This document is for informational purposes only. Specifications subject to change without notice.

