

## 2-input 2-output fiber optic access switch



## 2-input 2-output fiber optic access switch



All SW series 1xN components are designed to establish an optical connection between one optical port and either one of up to 32 input or output lines in a very short time, while the 2x2 variants are ...



A fiber-optic switch is a device used in fiber optics to route light from one or more input fibers to one or more output fibers. It can act as a simple on/off switch or a ...



A fiber-optic switch is a device used in fiber optics to route light from one or more input fibers to one or more output fibers. It can act as a simple on/off switch or a complex matrix switch with multiple inputs ...



It is available with single-mode, multimode, polarization-maintaining, double-clad, and specialty fibers, and supports fully bidirectional light propagation. The module integrates multiple control options, ...



The 2x2 single-mode switches are fully reversing optical bypass switches, which are used to insert or bypass nodes in fiber ring networks. These non-blocking, non-latching components require a 5V DC ...



2X2 Fiber Optical Switch connects optical channels by redirecting an incoming optical signal into a selected output fiber. The 2X2 Opto-Mechanical Optical Switch consists of 2 input and 2 output ...



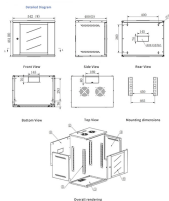
Search DigiKey's expansive product index to find detailed product information and pricing on millions of in-stock products. We get technical, so you can search with confidence!



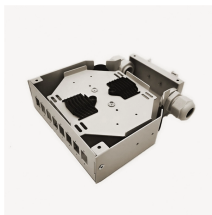
Estink SFP Ethernet Fiber Optic Switch, 1000m Ethernet Fiber Optic Transceiver, 4 Optical Ports 2 Electrical Ports, 120km, with LED Indicator, Supports 9k Bytes Jumbo Frames



The small size of the fiber switch and the easy control make these fiber optic switches ideally suited for use as components of spectrometers or other metrology devices.



Our Ethernet network switches with fiber ports comes in managed or unmanaged formats combined with both Industrial and Commercial grades. Utilize our PoE switches to power your Ethernet devices ...



The Brimrose fiber optical switch system plays a major role in modern fiber optic telecommunication and sensing systems that demands high-reliability operation, response, and continuous high frequency ...

## Contact Us

For more information, pricing, or custom solutions, please contact us:

Website: <https://indzawo.co.za>

Email: [sales@indzawo.co.za](mailto:sales@indzawo.co.za)

Phone: +27 71 296 8473

Address: 22 Quantum Street, Midrand, 1685, Gauteng, South Africa

This document is for informational purposes only. Specifications subject to change without notice.

