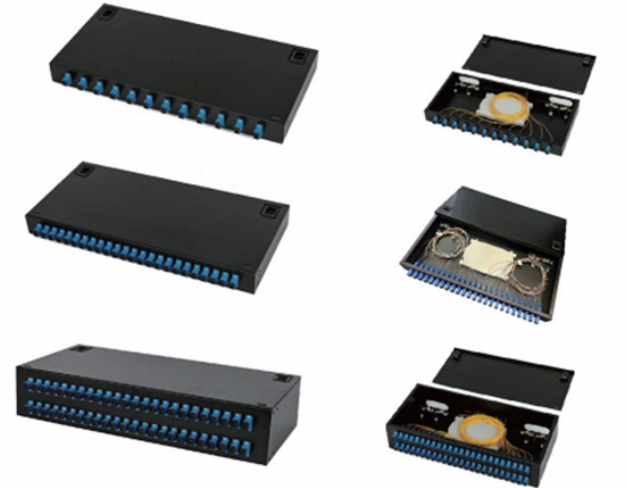


22V Optical Migration Amplifier



22V Optical Migration Amplifier



Get help for the account you use with Microsoft. Find how to set up Microsoft account, protect it, and use it to manage your services and subscriptions.



Your Microsoft account dashboard is where you can manage your personal information and security settings, keep tabs on your subscriptions and order history, and manage your payment and billing ...



This device is an Optical Amplifier for passive amplification of optical signals in the 1550nm channel band. This unit provides 22 dBm EDFA Constant Output Optical Amplifier for 1550nm. It also ...



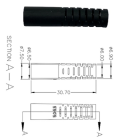
MACOM's optoelectronics products include a wide range of transimpedance amplifiers (TIA) for line and client side fiber optic receivers up to 1.6 Tbps . Our portfolio includes linear TIAs for coherent and ...



The redesigned Copilot overview page in the Microsoft 365 admin center delivers a centralized, comprehensive, and contextual view of Copilot across the tenant. This new experience ...



Super L band EDFA can be combined with super C band EDFA to provide customers with a high-bandwidth optical amplification solution.



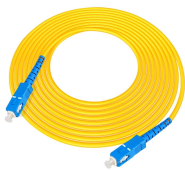
The DCP-F-A22 is a member of the DCP-F family that is designed for maximum configuration flexibility with the active units available as individual modules plugged directly into the standard Smartoptics ...



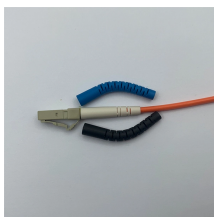
The DCP-F-A22 is a part of the DCP-F series, designed to offer the highest level of configuration flexibility. The active units are individual modules that can be directly plugged into the standard ...



Find help and how-to articles for Windows operating systems. Get support for Windows and learn about installation, updates, privacy, security and more.



The Optilab SOA-1550-BP is a semiconductor optical amplifier with high fiber-to-fiber gain, designed to be used in general applications to increase optical launch power to compensate for loss of other ...



Complete optical amplifier portfolio that includes EDFA, Raman, or EDFA-Raman hybrid covering C and L-bands, and are available at different levels of integration from gain block, module with full control, ...



Microsoft Support is here to help you with Microsoft products. Find how-to articles, videos, and training for Microsoft Copilot, Microsoft 365, Windows 11, Surface, and more.



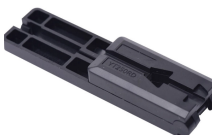
Analog Devices' optical and logarithmic transimpedance amplifiers (TIAs) offer high performance, single-chip solutions for precise photodiode current-to-voltage conversion.



In-line amplifiers: Periodically amplify signal due to fiber attenuation, high G, high Psat. An illustration of the effective gain is given below. Note the presence of a gain peak around 1530nm and a semi-flat ...



Prisma II Hybrid Amplifier Modules a pre-amplifier and a post-amplifier. This two-stage hybrid design optimizes pace efficiency and link performance. The Prisma II Hybrid Amplifier can be fed by either ...



Optical amplifiers are devices for amplifying the optical power of light beams, either in free space or in waveguides such as optical fibers.



To get help and troubleshoot other Microsoft products and services, enter your problem here. Post questions, follow discussions and share your knowledge in the Outlook Community.



For a list of the files provided in the servicing stack update, download the file information for the SSU (KB5083532) - version 26100.8035. Related topics Microsoft Store for Business and ...



Contact Microsoft Support. Find solutions to common problems, or get help from a support agent.



Microsoft has officially removed the SaRA utility from all in-support versions of Windows updates released on and after March 10, 2026. Can I reuse SaRA scripts with the Get Help ...



Built-in photodiode allows easy detection of light just by connecting to a voltmeter. Measures light at a narrow detection point. Separating the amplifier from the detection point allows measurement in ...



The PL-1000IL is designed to cost-effectively extend the optical link power budget for building long distance DWDM solutions.



Find out how to get support for Microsoft apps and services.

Contact Us

For more information, pricing, or custom solutions, please contact us:

Website: <https://indzawo.co.za>

Email: sales@indzawo.co.za

Phone: +27 71 296 8473

Address: 22 Quantum Street, Midrand, 1685, Gauteng, South Africa

This document is for informational purposes only. Specifications subject to change without notice.

