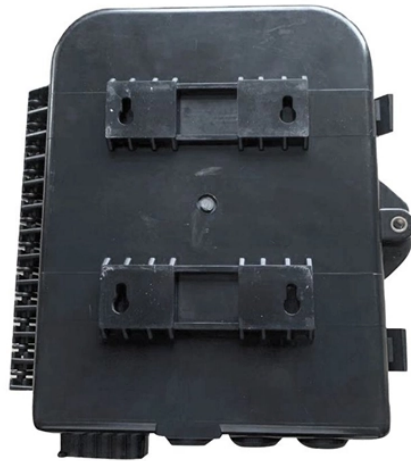


# Indzawo Optic Connect

## 232 Junction Box



## 232 Junction Box



RACO® boxes are installed in walls or ceilings for lighting fixtures, switches or receptacles. Square boxes are used where multiple conductor runs are split into two or more directions to bring power to ...



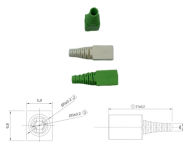
Description: Raco 232CS 4" Square Box Technical Description: Welded, Raised Ground Type; Pre-Galvanized Sheet Steel Material; 4 Inch; 4 Inch; 2-1/8 Inch; UL 514A, CSA C22.2 Approval; 25 Per ...



RACO 232 4 in. Square Electrical Box is designed to enclose electrical wiring, switches, receptacles or lighting fixtures. Square box is used where multiple conductor runs are split into two or more ...



RACO manufactures and/or sells steel and plastic boxes used at outlets, switch locations and junction points. RACO also offers a broad line of metallic fittings, including rigid plastic conduit fittings, EMT ...



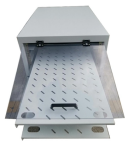
The RACO 232 is a versatile 4-inch square steel box built to last. With 17 knockouts in various sizes and locations, it provides the flexibility you need to run electrical wiring for outlets, switches, and lighting ...



Designed to enclose electrical wiring, switches, receptacles or lighting fixtures. ...



Part Number: 232 RACO Electrical Outlet Box, Raised Ground Welded, 2 Gangs, 16 Knockouts, 1/2 in Knockout, Conduit Knockout Cable Entry Size, Squared, Threaded Mount, 30.3 cu-in, Steel, Pre ...



Designed to enclose electrical wiring, switches, receptacles or lighting fixtures. Constructed from 1/16 in. pre-galvanized steel. 8-32 cover mounting screws assembled. Suitable for use without a bonding ...



RACO 232 4 in. Square Electrical Box is designed to enclose electrical wiring, ...



RACO® Boxes are installed in walls or ceilings for lighting fixtures, switches or receptacles Square boxes are used where multiple conductor runs are split into two or more directions to bring power to ...



The Winnie Industries T Box™ is an innovative junction box designed to streamline electrical installations by eliminating the need for bends or offsets, allowing conduit runs to enter straight in.



Designed to enclose electrical wiring, switches, receptacles or lighting fixtures. Constructed from 1/16 in. pre-galvanized steel. 8-32 cover mounting screws assembled. Suitable for use without a bonding ...

## Contact Us

For more information, pricing, or custom solutions, please contact us:

Website: <https://indzawo.co.za>

Email: [sales@indzawo.co.za](mailto:sales@indzawo.co.za)

Phone: +27 71 296 8473

Address: 22 Quantum Street, Midrand, 1685, Gauteng, South Africa

This document is for informational purposes only. Specifications subject to change without notice.

