

## 24-core optical cable connection method





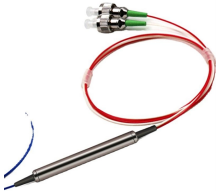


### Overview

The MTP®/MPO (Multi-fiber Push-On/Pull-off) connector is the backbone of modern high-speed data centers and telecom networks. Its core advantage lies in terminating multiple optical fibers (8, 12, 16, or 24) within a single, compact ferrule. 24-core MTP/MPO cabling represents an innovative, high-density wiring solution leveraging 24-core MTP/MPO cables. Compared with 24 fibers cabling that uses three 8 fibers MTP/MPO cables or two 12 fibers MTP/MPO cables, one 24 fibers MTP/MPO cable can provide higher density. Figure 1: 24-pin MPO connector Compared with. Compact, high-density, and standardized, MPO brings order to chaos by consolidating many fibers into a single plug. This article explains: And a. To maximize pathway efficiency, facility architects are increasingly deploying mpo 24 connectors as the primary interconnect for high-density trunking. But what makes it so special, and why should you care?

Buckle up; we're about to get into the nitty-gritty.

## 24-core optical cable connection method

|   |  |
|---|--|
|    | <p>If you only remember one thing: MPO is a multi-fiber connector standardized under IEC 61754-7 that allows you to terminate 8, 12, 16, 24, or ...</p>  |
|    | <p>This article introduces their basis first, then breaks down MTP®/MPO cable types by cable structure, fiber polarity, fiber count, cable mode, and jacket rating, providing a clear roadmap ...</p>      |
|  | <p>Deep Dive into mpo 24: Dual-Row Architecture and Core Functionalities The mpo 24 connector is an ultra-high-density optical interface defined under the TIA-604-5 (FOCIS 5) standard. ...</p>           |
|  | <p>Enter the 24 strand multimode fiber optic cable, a key player in the vast and intricate world of network infrastructure. But what makes it so special, and why should you care?</p>                     |
|  | <p>Solution 1: 24 fiber MTP/MPO Cable based Cross Connection. As shown in the figure below, the 24 cores MTP/MPO fiber jumper can be converted from 24 fibers to dual-core by using a 24 cores MTP ...</p> |



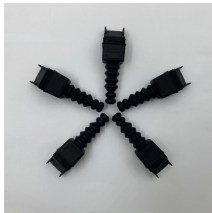
To facilitate the smooth transition of the network to 100G, it is generally recommended to use 24-core MTP/MPO cables. However, the polarity maintenance of 24-core MTP/MPO wiring is very ...



Compare 8, 12, 16, and 24 fiber MPO Connectors to understand differences in fiber count, compatibility, and how each type fits your network's needs.



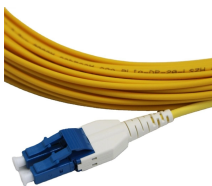
Anchored by the robust 24-core MTP/MPO cable connections, this cabling strategy emerges as the quintessential cost-effective solution for the deployment of both parallel and duplex ...



In order to increase the network scale, mtp-lc optical fiber distribution box and duplex LC optical fiber jumper are used to establish communication links between two 24 core MTP optical fiber ...



If you only remember one thing: MPO is a multi-fiber connector standardized under IEC 61754-7 that allows you to terminate 8, 12, 16, 24, or even 32 fibers in a single rectangular ferrule. ...



The MPO-24 connector is perhaps the most cost effective method to deploy both parallel and duplex fiber optic applications. With twenty-four fibers in a single connector it provides.

## Contact Us

For more information, pricing, or custom solutions, please contact us:

Website: <https://indzawo.co.za>

Email: [sales@indzawo.co.za](mailto:sales@indzawo.co.za)

Phone: +27 71 296 8473

Address: 22 Quantum Street, Midrand, 1685, Gauteng, South Africa

This document is for informational purposes only. Specifications subject to change without notice.

