

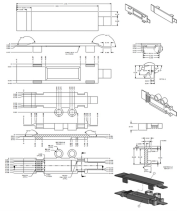
24-hour power supply and 4-hour optical output support Huawei switch



Overview

Huawei S5736-S24S4XC Switch is next-generation standard all-optical GE access switch with 24 x GE SFP ports, 4 x 10 GE SFP+ ports, One extended slot,, and 1+1 power supply backupHuawei S5736-S24S4XC Switch is next-generation standard all-optical GE access switch with 24 x GE SFP ports, 4 x 10 GE SFP+ ports, One extended slot,, and 1+1 power supply backupTherefore, you are advised to run the display system-software information command (available in V200R021C00 and later versions) to check the software version supported by the device before the downgrade. Figure 4-477 S5735-L24T4X-A1 appearance To restore the factory settings and reset the switch. There are several S5736-S24UM4XC bundles, which consist of different power supplies and ports, as listed in Table 4-1481. By default, multi-GE ports support 100 Mbit/s and 1000 Mbit/s. You can purchase an RTU license to increase the port rate to 2. The CloudEngine S5732-H builds on Huawei's unified Versatile Routing Platform (VRP) and boasts various IDN features. Built on next-generation, high-performance hardware and software platform, CloudEngine S5735-L-V2 switches stand out with compelling features such as intelligent stack.

24-hour power supply and 4-hour optical output support Huawei sw



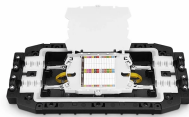
CloudEngine S5736-S supports Huawei Easy Operation, a solution that provides zero-touch deployment, replacement of faulty devices without additional configuration, USB-based deployment, ...



CloudEngine S5735-S-V2 switches support simplified operations and maintenance (O& M), and flexible Ethernet networking. It also provides enhanced Layer 3 features and mature IPv6 features. ...



CloudEngine S5731-S series switches support PoE. They have two power module slots, each of which can have a 1000 W PoE power module installed. The following table lists its power supply ...



switches feature flexible Ethernet networking, diversified security control, and support for multiple Layer 3 routing protocols — providing higher performance and more powerful service processing ...



Power Supply System The switch has a built-in AC power module and does not support pluggable power modules.



CloudEngine S5732-H series hybrid optical/electrical switch supports PoE. It has two power module slots, each of which can have a 1000 W PoE power module installed. The following table lists its ...



Huawei Switch S5735-L24P4X-A1 (24*10/100/1000BASE-T ports, 4*10GE SFP+ ...



Built on next-generation, high-performance hardware and software platform, CloudEngine S5735-L-V2 switches stand out with compelling features such as intelligent stack (iStack), flexible Ethernet ...



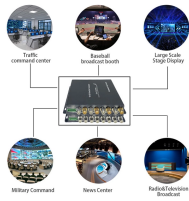
Huawei S5736-S24S4XC Switch is next-generation standard all-optical GE access switch with 24 x GE SFP ports, 4 x 10 GE SFP+ ports, One extended slot,, and 1+1 power supply backup



S5731-L4T2S-RUA Features | T he remote units of PoE module support PoE++ and provides data access and power supply for terminals such as Wi-Fi 6 APs, IP cameras, and IP phones. Some ...



Huawei Switch S5735-L24P4X-A1 (24*10/100/1000BASE-T ports, 4*10GE SFP+ ports, PoE+, AC power). Professional Managed Switch Series for operators and integrators, 10 Gigabit Series. Ideal ...



The switch is a PoE switch and supports two power module slots, each of which can have a 1000 W PoE or 600 W PoE power module installed. Pluggable AC and DC PoE power modules can be used ...



The Huawei CloudEngine S5735-L24P4S-A-V2 is an Ethernet switch featuring 24 PoE+ ports and 4 GE SFP ports, designed for efficient network management. It includes a built-in AC power supply, ...

Contact Us

For more information, pricing, or custom solutions, please contact us:

Website: <https://indzawo.co.za>

Email: sales@indzawo.co.za

Phone: +27 71 296 8473

Address: 22 Quantum Street, Midrand, 1685, Gauteng, South Africa

This document is for informational purposes only. Specifications subject to change without notice.

