

4-core optical cable and wavelength intensity



Overview

This article delves into why 850, 1310, and 1550 nm are standard, what less-known regimes and tradeoffs exist, and how an OEM fiber-cable manufacturer can design and test with wavelength considerations built in. Understanding these principles ensures your custom assemblies perform. Figure 1. 1 The stainless steel sleeve at the end of the bundle's common leg is engraved with the core size, numerical aperture (NA), wavelength range, and item number. 2 An Engraved Mark on the Linear Common End Connector's Strain Relief Sleeve Indicates the Axis of the Linear Fiber Array. Imm (main cord) Material Stainless Steel Color Silvery White UL94 V-0 (*Burning stops within 10 seconds on a vertical specimen, no drips of flaming particles.) *Exact product code is subject to the cable length. Specifications are correct at time of printing and subject to change or alteration. in up to 24 fibres and have an all-dielectric loose tube construction. It s all be water-blocked and UV resistant for use in outdoor environments. In order to accurately study optical modes, the complete Maxwell equations are to be solved. Leviton reserves the right to modify details without notice in light of subsequent standard/specificati.

4-core optical cable and wavelength intensity



Much smoother intensity profiles for the same beam quality are possible for non-monochromatic beams: although each wavelength component has a complicated profile, the fluctuations in these can ...



The meaning of FOUR is a number that is one more than three. How to use four in a sentence.



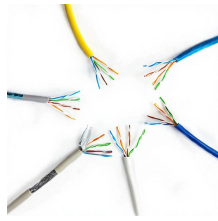
Datasheet: GD057198v10 850 nm LASER-OPTIMIZED 50/125 MULTIMODE OPTICAL FIBER IEC 60793-2-10 Type A1a.3 and ISO/IEC 11801 (OM4 cabled optical fiber)



Explore the hidden properties of 4, an even semiprime number composed of a single prime number multiplied by itself. Includes Prime Factorization, Divisors, Bases and Fun Facts for ...



Explore fascinating facts about the number 4. Discover its significance in various cultures, including its symbolism and representations in numerology, astrology, and mythology.



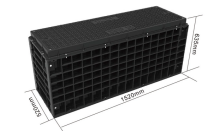
The result is a shift toward shorter wavelengths at the trailing edge of the signal (blue shift) as well as a shift toward longer wavelengths at the leading edge of the signal (red shift).



FOUR meaning: 1. the number 4: 2. a team of four people in rowing, or the boat that they use 3. in cricket, four.... Learn more.



Discover the fascinating world of the number 4! Explore its meanings, facts, religious significance, angel number interpretations, and its role in arts and literature.



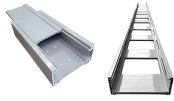
Four is the second square number (a "square number" is an integer that can be written as the square of some other integer) and the second centered triangular number.



We describe 4-core MCFs utilizing a trench core profile with 100 μm -cladding and 160 μm -coating, achieving a core density of approximately 10 times that of a standard 125 μm -cladding, ...



Specifications are correct at time of printing and subject to change or alteration without notice.



This cable has flame retardant and LSZH properties and is ideal for indoor installations. The cable is water-blocked and well suited for installation in ducts and on trays indoors and limited outdoor use in ...



7 senses: 1. the cardinal number that is the sum of three and one 2. a numeral, 4, IV, etc, representing this number 3..... Click for more definitions.



In order to maximize signal intensity, we recommend rotating the bundle while monitoring light levels in the spectrometer; once optimized, tighten down the threaded portion of the SMA connector to lock ...



Compare loss, transmission distance, and real-world applications to choose the right wavelength for your network or custom cable solution.



Explore the differences between G.652.D, G.657.A1, and G.657.A2 fiber optic cable specifications. Learn about their unique characteristics, bend performance, and applications to make ...



In order for the mode to be supported, it must be a standing wave pattern along r inside the core and a decaying exponential along r inside the cladding, with the boundary conditions supported at the step ...

Contact Us

For more information, pricing, or custom solutions, please contact us:

Website: <https://indzawo.co.za>

Email: sales@indzawo.co.za

Phone: +27 71 296 8473

Address: 22 Quantum Street, Midrand, 1685, Gauteng, South Africa

This document is for informational purposes only. Specifications subject to change without notice.

