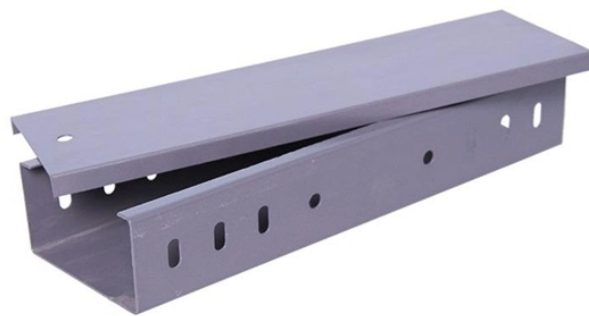


A comprehensive list of specifications for wiring plates in distribution boxes



Overview

Complete specification guide for outdoor electrical distribution boxes covering NEC Article 312 requirements, NEMA ratings, sizing calculations, and selection criteria for commercial and residential applications. Pre-fabricated metallic boxes and assemblies Metallic outlet boxes, device boxes, rings and covers Non-metallic outlet boxes, device boxes, rings and covers While-in-use and weatherproof outlet boxes and covers. Junction boxes and pull boxes Related sections: 01 81 16 Facility Environmental. BAHRA Load Centers are used for safe and reliable distribution of electrical power for indoor application in residential and commercial buildings. BAHRA Load Centers are powered by the best selection of international proven quality of breakers by BAHRA to provide reliable circuit protection against. Learn how to install a distribution box safely and correctly. A distribution box is the heart of any electrical system. It takes the incoming power and safely distributes it to different circuits throughout your building. Table 1 lists the template SPU standards developed during DSG publication.

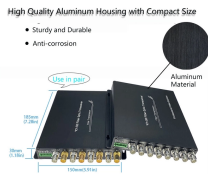
A comprehensive list of specifications for wiring plates in distribution



Hey, in this article we are going to see the Single Phase Distribution Box Wiring Diagram and Connection Procedure. A distribution board or distribution box is where the main power supply is ...



They allow for easy wire routing, identification and easy maintenance. The optimized size of the product makes transporting and handling easy and also prevents the need of a large pocket in the wall for ...



The materials covered under this Specification shall comply with the requirement of the latest version of the following standards as amended up to date, except where specified otherwise.



The Construction Specifications Institute (CSI) has developed a standard format for specifications. DSG electrical specifications have been arranged and formatted to conform to CSI standard, ...



Learn how to install a distribution box safely and correctly. Covers wiring, placement, standards, and expert tips for a compliant setup.



Understand distribution boxes (DB boxes) in 5 minutes. Learn about types, components, functions, and uses. Find the perfect DB box for your needs.



This specification guide provides system designers, electrical engineers, and procurement professionals with the technical criteria needed to select compliant outdoor electrical ...



Wiring Devices, Components, and Accessories: Listed and labeled as defined in NFPA 70, by a qualified testing agency, and marked for intended location and application.



Free architectural library for electrical, lighting and power distribution design information, quickly access manufacturer's websites for the product information you need.



The document specifies the quantities and descriptions of distribution boxes, cables, and an online UPS system. It includes 6 items of distribution boxes for control rooms, stages, and near the UPS with ...

Contact Us

For more information, pricing, or custom solutions, please contact us:

Website: <https://indzawo.co.za>

Email: sales@indzawo.co.za

Phone: +27 71 296 8473

Address: 22 Quantum Street, Midrand, 1685, Gauteng, South Africa

This document is for informational purposes only. Specifications subject to change without notice.

