

# **Acrylic Distribution Box Switch Markings**



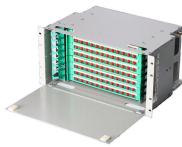
## Acrylic Distribution Box Switch Markings



Identify the incoming breakers or switches on high voltage switchgear and fused switch lineups with the utility or University substation source circuit identification number and location.



Label conduit at all wall penetrations and connections to all panels, junction boxes, and equipment served. Use a black indelible marker and hand print label in a clear workmanlike manner, or use ...



Identify all drives, starters, disconnect switches, and control devices with a plate or thermal-transfer label. Match identification exactly to equipment legend noted on the drawings.



Properly labeling electrical equipment such as circuit breakers, switches, junction boxes, and machines helps ensure safety and efficient operation.



Clarity and Specificity: Labels must clearly and specifically describe the purpose or use of each circuit, including spare positions that have an unused overcurrent device. This specificity helps ...



Understand your distribution box labels to identify circuits, improve safety, and troubleshoot electrical issues in your home with confidence.



It used to involve a labeller, a pair of scissors, a lot of wasted tape offcuts and no small amount of frustration to make labels fit distribution boards, sockets, switches, trunking, conduit and equipment.



Place your labels next to the corresponding breaker switch, not over the breaker handle or panel directory (for legibility). For panels with a built-in directory, fill it in with permanent marker or ...



Electrical Equipment Did You Know? Proper labelling at all distribution points, circuit breakers, fuses and switches is required during installation, as well as whenever .



Keep your employees safe by using electrical wire and identification labels to identify arc flash warnings, conduit voltage marking, energy sources and more.



Match identification markings with designations used in panel boards shop drawings, Contract Documents, and similar previously established identification schemes for the facility's electrical ...

## Contact Us

For more information, pricing, or custom solutions, please contact us:

Website: <https://indzawo.co.za>

Email: [sales@indzawo.co.za](mailto:sales@indzawo.co.za)

Phone: +27 71 296 8473

Address: 22 Quantum Street, Midrand, 1685, Gauteng, South Africa

This document is for informational purposes only. Specifications subject to change without notice.

