

## All lights on the HPE fiber optic switch are on



## All lights on the HPE fiber optic switch are on



All the LEDs will stay on indefinitely. Try power cycling the switch. If the fault indication reoccurs, the switch may have failed. To get assistance, either call your Aruba authorized network reseller, or use ...



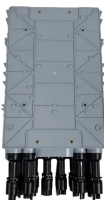
Check the switch LEDs for indications of proper switch operation: Each switch port has a Link LED that should light whenever an active network device is connected to the port.



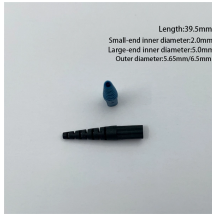
The 1820 48G PoE+ Switch has 48 auto-sensing 10/100/1000BASE-T RJ-45 ports and four SFP slots for supported HPE SFP fiber-optic transceivers (ports 49 to 52). The switch supports the IEEE 802.3at ...



Document Display | HPE Support Center Support Center



HPE Switch Gigabit Fiber Modules: Access product support documents and manuals, software, download drivers by operating environment, and view product support videos.



Understand what green, orange, and blinking lights on Ethernet ports indicate. Step-by-step guide to diagnose and troubleshoot network connectivity issues.



\*\* The Module Status LED is located on the module in the rear of the switch. (This is not applicable to the 10/100 3500PoE and non-PoE switches.)



Review the different power options and verify that the cables are properly connected. Indicates that the device is booting or upgrading. It can take up to 8 minutes for the device to be ready. Indicates that ...



Show uptime of the switch since reboot, for VSF stacked switches shows uptime for each member. Show switch time and date, for log correlation. Show what firmware images are stored in ...



With the access point switched off, this won't be a problem. We'll be installed new access points soon, but we'll make sure we use a different SSID or key, then we can control what's connecting.

## Contact Us

For more information, pricing, or custom solutions, please contact us:

Website: <https://indzawo.co.za>

Email: [sales@indzawo.co.za](mailto:sales@indzawo.co.za)

Phone: +27 71 296 8473

Address: 22 Quantum Street, Midrand, 1685, Gauteng, South Africa

This document is for informational purposes only. Specifications subject to change without notice.

