

## Baiyun Steel Structure Bridge



### Overview

Chenxiang Bridge, an important passage across the Pearl River connecting Foshan and Guangzhou, is expected to start construction in January 2023, local media outlets reported on Aug 15. The projects total length is planned to be 3. The bridge is not suspended from cables or chains but rather from lenticular trusses shaped like a suspension cable. The deck. 170 baiyun bridge stock photos, vectors, and illustrations are available royalty-free for download. Taoyuan City, Taiwan - January 22, 2014: People perform extreme sports of high-altitude bungee jumping on the steel structure bridge over the stream. Q235, Q345, ASTM\_A36, A572, Ss400, Ss490. Union construction group is an enterprise founded in 1995 with extensive experience in construction projects in China. It focuses on general. Please provide details on usage, location, local climate (including wind and snow conditions), dimensions, and any crane information. - Usage: What is the intended use of the product?

- Location: In which country will it be constructed?

- Local climate: What are the wind speed and snow load. In this gallery you

will find photographs, images, videos and other kinds of media of the structure " Lantian Baiyun Bridge " in reversed chronological order based on the date when the photos were taken (where known). It focuses on general contracting.

## Baiyun Steel Structure Bridge



The steel structure arch bridge starts on Liguang Road in Lishui town in Foshan in the west, and spans eastward along Jinfeng Avenue to the west bank of the Pearl River, and then crosses the Pearl River ...



The two-span bridge is an unusual suspension bridge with a mostly unusual design, but it may have been inspired by the suspension side spans of the Tower Bridge in London. The bridge is ...



The successful hoisting of steel crossbeams marks the official launch of the mainline steel box girder hoisting for the "Guangzhou Baiyun Municipal 6 Project", and also accelerates the overall goal of ...



China leading provider of Steel Truss Bridge and Modular Steel Bridge, CHINA HARZONE INDUSTRY CORP.,LTD. is Modular Steel Bridge factory.



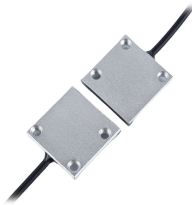
It is an enterprise with the first-class qualification for steel structure manufacturing in China, a council member of the China steel construction society and guangdong steel structure association, a ...



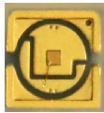
China leading provider of Steel Truss Bridge and Modular Steel Bridge, CHINA HARZONE INDUSTRY CORP.,LTD. is Modular Steel Bridge factory.



Find Baiyun Bridge stock images in HD and millions of other royalty-free stock photos, illustrations and vectors in the Shutterstock collection. Thousands of new, high-quality pictures added every day.



On April 27, 2024, the Baiyun District of Guangzhou City was struck by a tornado, leading to severe damage to a large number of buildings, particularly light-gauge steel structures, including roof ...



The company has a professional, highly skilled team, advanced production lines for main steel structures and building enclosure systems, and over 30 national invention patents and utility model patents.



We select national standard steel, inspect each process, and support third-party inspections. Is customization available? Yes, we have a professional design team that can work according to your ...



In this gallery you will find photographs, images, videos and other kinds of media of the structure " Lantian Baiyun Bridge " in reversed chronological order based on the date when the photos were ...

## Contact Us

For more information, pricing, or custom solutions, please contact us:

Website: <https://indzawo.co.za>

Email: [sales@indzawo.co.za](mailto:sales@indzawo.co.za)

Phone: +27 71 296 8473

Address: 22 Quantum Street, Midrand, 1685, Gauteng, South Africa

This document is for informational purposes only. Specifications subject to change without notice.

