

## Belgian delivery time edge data center waterproof type



### Overview

There are three models of the HPE Edge Center to meet the differing infrastructure needs. HPE Edge Center is a self-contained single rack modular, software-defined edge data center optimized to protect on-premises cloud, hybrid IT or IoT environments. It does this by edge enabling compute, network, storage, and control automation infrastructure. It has all the protection you need in an. However, the right timing and strategy for moving data centers (and related services) to the edge will be different for each organization, depending on the conditions, environment and business opportunities in its marketplace. Click on a market below, to explore its data center locations. Save the trouble of contacting the providers yourself, check out our Quote Service. Edge data center solutions from Vertiv offer the fastest path to scale Edge capacity. This proximity reduces latency from 50-100 milliseconds down to single digits, which matters for applications where every millisecond of. EdgeMode develops high-MW, power-secure data center campuses supported by a hybrid energy architecture.

## Belgian delivery time edge data center waterproof type



Built around you, our cutting-edge platform is engineered for speed, agility and performance, revolutionizing how data lives and moves across the continent. ...



Do you need to procure colocation, cloud, connectivity or other data center services in Belgium or other locations? We can help you navigate the market, through our many years of experience and deep ...



Between 2025 and 2030, the Belgian data center sector is set for a remarkable surge, with forecasts pointing to a compound annual growth rate (CAGR) of 13.47%.



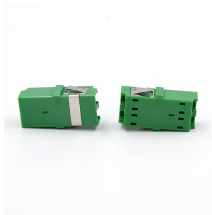
Rather than waiting months to design and deploy a new Edge Data Center solution or retrofit an existing space, a Vertiv™ SmartRow™ 2 can be installed in less than 5 days.



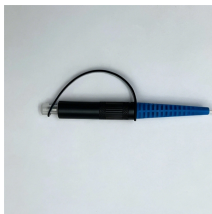
Tier-3-ready campuses engineered for hyperscalers, AI compute operators, and cloud providers. Large-scale sites built for rapid delivery and extreme-density AI workloads. Co-developed with grid ...



Edge data centers process data close to end users, reducing latency from hundreds of milliseconds to single digits. Learn how edge computing works, ...



Built around you, our cutting-edge platform is engineered for speed, agility and performance, revolutionizing how data lives and moves across the continent. Experience the future of colocation ...



Edge data centers process data close to end users, reducing latency from hundreds of milliseconds to single digits. Learn how edge computing works, why AI workloads are driving ...



HPE Edge Center is a self-contained single rack modular, software-defined edge data center optimized to protect on-premises cloud, hybrid IT or IoT environments.



However, the right timing and strategy for moving data centers (and related services) to the edge will be different for each organization, depending on the conditions, environment and business opportunities ...



Global tech firms are accelerating investment in Belgium's data center landscape, including the Hyperscale Entry. The upcoming power capacity will boost Belgium's digital infrastructure readiness ...



Unlike traditional centralized cloud or core data centers, which may involve data traveling longer distances, edge data centers distribute operations to handle time-sensitive tasks locally while ...

## Contact Us

For more information, pricing, or custom solutions, please contact us:

Website: <https://indzawo.co.za>

Email: [sales@indzawo.co.za](mailto:sales@indzawo.co.za)

Phone: +27 71 296 8473

Address: 22 Quantum Street, Midrand, 1685, Gauteng, South Africa

This document is for informational purposes only. Specifications subject to change without notice.

