

## Bracket at the bend of the cable tray



## Bracket at the bend of the cable tray



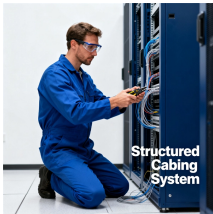
Center Clip Used to connect two sections of basket tray at any angle; also used to secure two halves of one tray section formed into a horizontal bend.



When fitting cable trays and their accessories, the products are cut on site to create changes of direction, adjust sections, etc. Damage can also occur during handling; as a result, both the ...



This allows the tray to rest on each side of a wall opening where in which the tray can not run through. It can also be used to simple support the end of a raceway run.



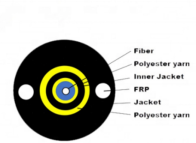
Choose from our selection of cable tray mounting brackets in a wide range of styles and sizes. Same and Next Day Delivery.



To avoid transverse bending at higher loads, a joint plate must be used for tray widths of 400 mm or more in the joint area of the cable trays that are to be connected.



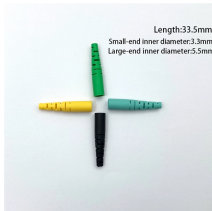
Cable tray length is selected based on the load to be supported, the distance between the supports (also referred to as the span), and handling and installation constraints.



Different types of bends Including horizontal/vertical/tee /cross/reducer L-Type Jointing Coupler Horizontal bend for perforated and ladder type cable tray Horizontal Bend For Ladder Cross For ...



To install the cable tray supports, first find the required elevation from the floor to the bottom of the cable tray and establish a level line with a laser or a nylon string.



Guide for making bends, tees, crosses, risers and reducers from straight sections of wire basket cable trays live at the project.



It is designed for mechanical support and strain relief in long runs of cable and creates a smooth gradual bend for cable. Rail and stringer material is 16 ga steel tubing.



The Wire Basket Overhead Cable Tray Routing System is composed of pathways, splices, mounting brackets, and accessories that allow the system to be configured for a wide range of applications and ...

## Contact Us

For more information, pricing, or custom solutions, please contact us:

Website: <https://indzawo.co.za>

Email: [sales@indzawo.co.za](mailto:sales@indzawo.co.za)

Phone: +27 71 296 8473

Address: 22 Quantum Street, Midrand, 1685, Gauteng, South Africa

This document is for informational purposes only. Specifications subject to change without notice.

