

Branching circuits of the courtyard electrical distribution box



Overview

Article 210 provides the general requirements for branch circuits not over 1000V ac or 1500V dc. Branch circuits account for most circuits run in any electrical installation, so it pays to be familiar with the requirements. These include requirements for conductor sizing, overcurrent protection. Material preparation: Prepare the required circuit breakers, wires, wiring ties and other materials, and ensure that they meet the design drawings and installation requirements. Location determination: Determine the installation position of the circuit breaker according to the position of the. Since 2018, Leviton Load Centers have transformed power distribution by fusing advanced engineering with modern design. It covers essential safety features, grounding requirements, and the identification of conductors in residential electrical systems. Typical 120V branch circuits. COPYRIGHT © 2026 INTERNATIONAL CODE COUNCIL, INC. Messy distribution boxes are dangerous and very hard to fix.

Branching circuits of the courtyard electrical distribution box



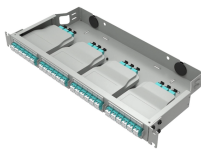
Article 210 provides the general requirements for branch circuits not over 1000V ac or 1500V dc. These include requirements for conductor sizing, overcurrent protection, identification, GFCI and AFCI ...



Branch circuits recognized by this article shall be permitted as multiwire circuits. A multiwire circuit shall be permitted to be considered as multiple circuits. All conductors of a multiwire ...



Preview Leviton's catalog of load center products like breaker boxes, electric panels, main breaker, main lug, indoor, outdoor, branch circuit breakers, and more.



Master the safest and most efficient circuit breaker wiring configurations. Learn about single-phase vs. three-phase setups, safety standards, and future-proof electrical ...



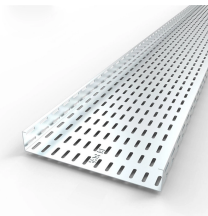
Wiring Direction: Wiring between the main circuit breaker and each branch circuit breaker in the box generally goes on the left, and the wiring out of the distribution box generally goes on the ...



A distribution box is a general electrical enclosure used to organize and route power from one source to multiple outgoing circuits. Depending on the installation, it may contain terminals, breakers, fuses, ...



Distribution circuits to residential areas are similar to overhead designs, except the installation is underground. Primary mains, with take-offs, are installed to which are connected the distribution ...



The article discusses the wiring of typical 120V branch circuits, focusing on receptacle outlets, switch outlets, and light outlets. It covers essential safety features, grounding requirements, and the ...



ICC Digital Codes is the largest provider of model codes, custom codes and standards used worldwide to construct safe, sustainable, affordable and resilient structures.



This single-phase supply has been divided into two circuits (i.e., light circuit and power circuit), and separate meters, as well as the main switches, have been installed within each flat of a ...



Master the safest and most efficient circuit breaker wiring configurations. Learn about single-phase vs. three-phase setups, safety standards, and future-proof electrical planning.

Contact Us

For more information, pricing, or custom solutions, please contact us:

Website: <https://indzawo.co.za>

Email: sales@indzawo.co.za

Phone: +27 71 296 8473

Address: 22 Quantum Street, Midrand, 1685, Gauteng, South Africa

This document is for informational purposes only. Specifications subject to change without notice.

