

## Broadband Fiber-to-the-Home Design



### Overview

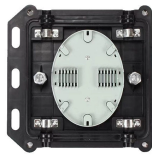
Fiber to the Home (FTTH) is a key technology in delivering high-speed internet directly to homes and businesses. This tutorial explores the essential aspects of FTTH, including network architecture, configuration and the various technologies involved, such as AON, PON, EPON . Rather than telling you how to design a FTTH network, we will illustrate some of the different network architectures, construction methods, etc. If you are new to fiber optic network design, we. The simplest way to begin designing a fiber-to-the-home (FTTH) network architecture is to consider where you'll be building it. These four options are the most common types of FTTH designs. Earlier. According to the latest figures from Point Topic, global fixed access broadband subscribers reached 1. With this point-to-point style.



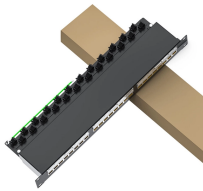
## Broadband Fiber-to-the-Home Design



Rather than telling you how to design a FTTH network, we will illustrate some of the different network architectures, construction methods, etc. possible, then offer options that may work for your network ...



Fiber to the Home (FTTH) is a key technology in delivering high-speed internet directly to homes and businesses. This tutorial explores the essential aspects of FTTH, including network architecture, ...



Find internet service with download speeds up to 1 Gbps from Fiber, Cable, DSL, Wireless and Satellite providers. Check availability by ZIP code or address, compare speeds and ...



Brightspeed offers ultrafast fiber and broadband internet plans with no annual contracts. Check availability, pay your bill, or run a speed test today.



Learn what FTTH is and how it works. Explore PON technologies, architecture, and benefits for high-speed fiber broadband networks.



From initial design and permits through weeks (or months) of physical construction, splicing, and testing, all culminating in that moment when the first home gets fiber-optic internet.



The simplest way to begin designing a fiber-to-the-home (FTTH) network architecture is to consider where you'll be building it. These four options are the most common types of FTTH designs.



Find all internet providers in your area. Enter your zip or address to quickly see which of the 2,891 internet providers in the US service your area.



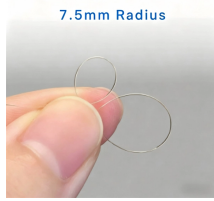
When deciding on the best approach, it's important to understand these architectures in detail and weigh the trade-offs. Let's look at some examples that illustrate similarities and differences. This ...



Fiber to the home (FTTH) is the ideal fiber-optics architecture. In this architecture, fiber deployment is carried all the way to the customer's home (premises). Today it seems that everyone wants high ...



The FCC National Broadband Map displays where Internet services are available across the United States, as reported by Internet Service Providers (ISPs) to the FCC. The map will be updated ...



This document outlines the key architectural components of fiber to the home (FTTH) technologies, including the service provider's and the on-premises equipment.



Find and compare internet providers available at your address. Check real speeds, pricing, and availability from 35,000+ locations.



Additionally, for the first time, Fiber to the Home (FTTH) connections were more than half of all fixed broadband connections. In the following blog, we look at the main components and general ...



Technology Type DSL: DSL provides internet service via phone cables and is up to ten times faster than dial-up service. Cable: Cable provides internet speeds faster than DSL through the same cables ...



Compare internet providers by zip code. Find plans, pricing, and deals from 2,600+ providers across 31,000+ cities. As seen in Business Insider and USA Today.



Save on Xfinity Digital Cable TV, High Speed Internet and Home Phone Services. Enjoy entertainment your way with great deals on Xfinity by Comcast.

