

## Bulgarian FOB Price 100G Dedicated Switch



### Overview

A new cash-settled futures contract connecting wheat from the export-intensive Black Sea region to the global market is off to a strong start, offering a platform to traders for risk management, arbitrage opportunities with other regional markets and potential cross-hedging strategies. Automation Industry, Branch Office, Enterprise, Infrastructure, Network, Personal, Power, Router, Security, Server, Small Business, Surveillance, Traffic Automation Industry, Branch Office, Enterprise, Infrastructure, Network, Personal, Power, Router, Security, Serv. See more Security, Ease of Use. Get it 25 May, 2026 9 in Global Warehouse. Get it 25 May, 2026 FS 100G Switches offer high programmability and scalability, designed for large enterprises and hyper-converged infrastructure (HCI) networks. Learn more! What are the hours for trade entry on CME ClearPort and on CME Globex?

Will trades executed at 1:30 p. CT be attributed to today or tomorrow's trade date?

What are the position limits?

What is the listing schedule?

I am a bona-fide hedger and I need to exceed position limits. Current prices of wheat, corn (maize), barley, soybeans, rapeseed, canola, sunflower seeds, vegetable oils. More specifically, our Ukraine wheat pricing is used for tax purposes and many of our global wheat price assessments are used by trade financiers to value collateral against. Argus. Based on the final official harvest data, the Bulgarian corn crop fell to only 1.5 million metric tons (MMT) in marketing year (MY) 2024/25.

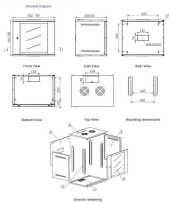
## Bulgarian FOB Price 100G Dedicated Switch



Argus organic wheat pricing covers 6 commercial varieties of wheat and is used to understand regional prices, negotiate prices on the buy and sell side of deals, produce procurement budgets for major ...



Air Export ... \*\* CWT 1:6 \*\* Effective date from 01.01.2023 - 31.12.2023 if the price fluctuation within this period is +/- 5% we take the right to adjust the rate. \*\* Abv rates are subject to ...



By entering relevant information such as the product cost, packaging expenses, and inland transportation costs, the FOB Calculator provides an accurate estimation of the FOB price, allowing ...



This category offers switches of various designs with a maximum data rate of up to 100G. The fiber optic ports are designed as SFP slots, therefore you can connect to any fiber type or different wavelengths ...



Active  
Optical  
Cable

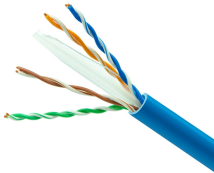
Found a lower price? Let us know. Although we can't match every price reported, we'll use your feedback to ensure that our prices remain competitive.



Now live Black Sea Wheat CVB futures Our cash-settled contract offers a new way to manage price exposure in the Black Sea wheat markets while addressing counterparty credit risk.



Current prices of wheat, corn (maize), barley, soybeans, rapeseed, canola, sunflower seeds, vegetable oils.



The stability in overall export levels also helps to make the CVB price a reliable price indicator for the broader Black Sea region.



The average price has gradually increased since June (Graphs 4 and 5) but could not grow faster due to the pressure from regional/international corn prices. In January 2025, domestic prices were five ...



FS 100G Switches offer high programmability and scalability, designed for large enterprises and hyper-converged infrastructure (HCI) networks. Learn more!

## Contact Us

For more information, pricing, or custom solutions, please contact us:

Website: <https://indzawo.co.za>

Email: [sales@indzawo.co.za](mailto:sales@indzawo.co.za)

Phone: +27 71 296 8473

Address: 22 Quantum Street, Midrand, 1685, Gauteng, South Africa

This document is for informational purposes only. Specifications subject to change without notice.

