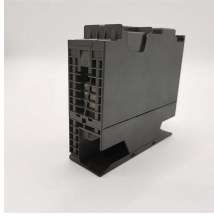


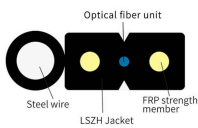
# **Bulk Procurement of IP67 Seismic-Resistant Cabinets for Rail Transit**



## Bulk Procurement of IP67 Seismic-Resistant Cabinets for Rail Transi



Belden's Server and Switch Cabinets are certified to Seismic Zone 4 requirements, passing vibration and shock testing per GR-63-CORE Network Equipment Building System (NEBS) requirements with ...



Let's discuss your energy needs—whether it's photovoltaic containers, foldable solar containers, mobile energy storage, telecom site power systems, distributed cabinets, IP65 battery cabinets, balcony PV, ...



This study presents the effect of post-installed anchor interaction on the seismic response of an electrical cabinet to drive the ICRS considering primary-secondary interaction (PSSI).



With our expertise, advanced engineering capabilities, and commitment to safety and structural integrity, we deliver custom seismic-resistant storage tanks that meet the unique requirements of our clients



Products include 2- and 4-post racks, indoor/outdoor cabinets, and seismic accessories; all constructed of heavy gauge steel.



Below is a comprehensive overview of the most common types of outdoor IP67 cabinets, their benefits, ideal use cases, and key considerations—especially important when purchasing in bulk for ...



In the present study, the seismic response of the electrical cabinet is evaluated by coupled and decoupled analysis using nonlinear hysteretic behavior of post-installed anchors.



Our storage& #32;systems feature seismic-resistant, moment-resisting reinforcements, offering the strength and flexibility to evenly distribute seismic forces and absorb energy.



Latest Cabinet Solutions & Industry Updates Stay informed about the latest developments in cabinet manufacturing, IP rating standards, outdoor enclosure technology, and industrial cabinet solutions.



Let's discuss your energy needs—whether it's photovoltaic containers, foldable solar containers, mobile energy storage, telecom site power systems, distributed cabinets, IP65 battery cabinets, balcony PV, ...



In this study, Finite Element (FE) models of a single-door electrical cabinet and concrete shear wall structure validated through experimental data are used for a decoupled analysis to ...

## Contact Us

For more information, pricing, or custom solutions, please contact us:

Website: <https://indzawo.co.za>

Email: [sales@indzawo.co.za](mailto:sales@indzawo.co.za)

Phone: +27 71 296 8473

Address: 22 Quantum Street, Midrand, 1685, Gauteng, South Africa

This document is for informational purposes only. Specifications subject to change without notice.

