

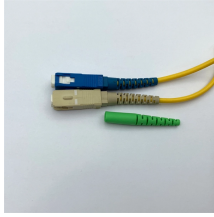
Cable tray angle steel support arm specifications



Overview

Standard length: 3000mm with ± 3 . Hot Dip Galvanized after fabrication (ASTM A123 or BS EN ISO 1461:2009). Other custom coatings are available upon. Hubbell's NEXTFRAME® Ladder Tray is the effective and widely used cable runway that supports and delivers bundles of cable between cabinets, racks, and closets, along walls, and suspended from ceilings. The Ladder Tray features light, rugged, tubular steel construction. Cable supports are manufactured according to common standards from high quality raw materials. UNITECH's metal framing channel is cold formed on modern rolling machines from low carbon. Address: Xi'an Lai'an Center T2, YanZhan Road, Yanta District, Xi'an China. 3599078402313 us-trations without notice. All illustrations, descriptions and technical information included in this document are provided as indications and can cable trays are equivalent.

Cable tray angle steel support arm specifications



The flexible coupler provides easy installation without measuring and cutting cable tray side rails. Once installed, the coupler allows for electrical continuity, therefore eliminating the requirement for a ...



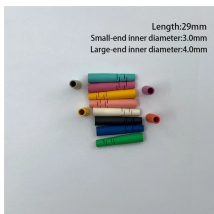
The document provides specifications for cable trays, cable ladder, supports, galvanized conduit, and accessories. It includes dimensions and quantities for ...



Our Pre-Galvanised products are manufactured using continuously pre-galvanised, normally grade Z275 sheet / coil which conform to SANS 4998, SANS 3575, EN10346, ASTM 653, and related specifications.



Cablofil Electro Zinc Steel Wire Cable Tray 90° Angle Support REF. CM840231 EAN. 3599078402313



Cable Support Systems are well designed to provide necessary support for cable trays, cable ladders and trunkings. Cable supports are manufactured according to common standards from high quality ...



The Ladder Tray features light, rugged, tubular steel construction. It is designed for mechanical support and strain relief in long runs of cable and creates a smooth gradual bend for cable.



Address: Xi'an Lai'an Center T2, YanZhan Road, Yanta District, Xi'an China.



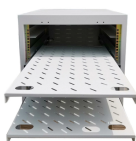
Galvanic corrosion must be taken into account within the whole cable management system and makes it essential to choose the right supports, accessories (coupling, screws, equipotential bonding, etc).



Fasten and support cables that pass from one cable tray to another or drop from cable trays to equipment enclosures. Fasten cables to the cable tray at the point of exit and support cables ...



The systems comprise I hanging supports, support brackets, head plates, I supports and I support connectors, as well as carrier lugs and mounting angles. The high load ca-pacity of all the system ...



Our products are all illustrated for easy identification, and detailed by type descriptions, type names and article numbers. We have also included the weights in order that considerations can be made for ...



We are Manufacturer, Supplier, Exporter of Cable Trays, Cable Tray Support Systems, Horizontal Bend for Cable Trays, from Pune, Maharashtra, India. Standard Specifications

Contact Us

For more information, pricing, or custom solutions, please contact us:

Website: <https://indzawo.co.za>

Email: sales@indzawo.co.za

Phone: +27 71 296 8473

Address: 22 Quantum Street, Midrand, 1685, Gauteng, South Africa

This document is for informational purposes only. Specifications subject to change without notice.

