

Indzawo Optic Connect

Cable tray edge width



Cable tray edge width



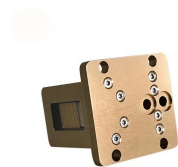
When fitting cable trays and their accessories, the products are cut on site to create changes of direction, adjust sections, etc. Damage can also occur during handling; as a result, both the ...



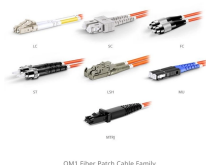
Cable tray width represents the inside measurement between the longitudinal side rails and is the primary dimension that determines cable capacity. Standard electrical cable tray dimensions ...



Explore standard sizes by tray type, understand width and depth limits, and see how to calculate and choose compliant cable tray sizes for real projects.



MP Husky's cable tray selector for choosing the correct tray type (ladder, solid bottom, perforated, wire mesh) and size based on load, cable type and installation requirements.



OM3 Fiber Patch Cable Family

Width — sum of cable diameters across the tray, with spacing, plus a margin for future additions.
Depth — single-layer is ideal; multi-layer is allowed but demands derating and careful ...



Learn how to calculate the perfect cable tray size and dimensions for your electrical project. This guide covers load capacity, fill ratios, and industry standards.



The total sum of the cross-sectional areas of all the single conductor cables to be installed in the cable tray must be equal to or less than the allowable cable area for the tray width.



Note: Width = outside to outside dimensions. Commonly called the Load Class, this defines the load-carrying capability of the tray for a specific support span distance. The design and cost of the cable ...



Learn about cable tray width dimensions and specifications as per NEC standards. Understand types, sizes, materials, and installation guide



Cable tray length is selected based on the load to be supported, the distance between the supports (also referred to as the span), and handling and installation constraints.

Contact Us

For more information, pricing, or custom solutions, please contact us:

Website: <https://indzawo.co.za>

Email: sales@indzawo.co.za

Phone: +27 71 296 8473

Address: 22 Quantum Street, Midrand, 1685, Gauteng, South Africa

This document is for informational purposes only. Specifications subject to change without notice.

