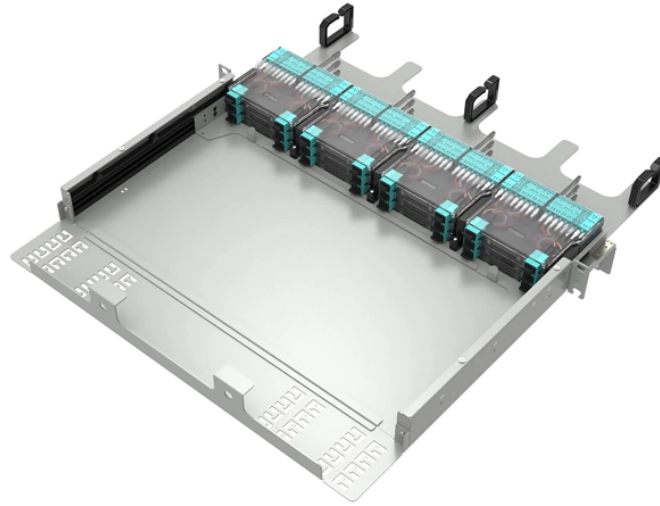


## Cable trays on climbing scaffold



## Cable trays on climbing scaffold



If cable tray is not properly designed to be compatible with its application and environment, electrical system failures can occur. This could cost millions of dollars in downtime and cause serious safety ...



This publication is intended as a practical guide for the proper and safe\* installation of cable ladder systems, cable tray systems, channel support systems and associated supports.



The document provides guidelines for installing cable trays and accessories. It outlines 15 steps for the installation process including preparing cable tray supports, surveying the route, cutting trays to ...



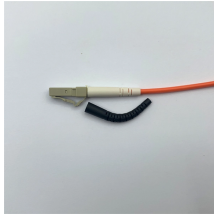
Refers to the approximate height of a cable tray used for specifying. Selecting a specific height will show cable trays with that height, as well as cable tray accessories compatible with that height.



Heavy duty cable trays and cable ladders are manufactured from pre-galvanized, electro-galvanized, or hot-dipped galvanized sheet metal, designed to meet ideal environmental working conditions for ...



Our wind certification report provides you with list of acceptable B-Line series cable tray supports, fittings and covers based off of the environmental conditions, cable loading, and type of cable tray in your ...



Chalfant Ladder Cable Tray Systems are ideal for indoor and outdoor cable management. They provide reliability, ease of installation, and cost savings both initially and long term.



Inasmuch as cable tray is designed as a support for power or control cables, or both, and is not intended or designed to be a walkway for personnel, the user is urged to display appropriate warnings ...



You'll learn how scaffolding supports cable tray installation at height and how crane scaffolding ensures safe access for lifting operations. ☐☐ Topics Covered: Cable Tray Scaffolding...



If visual observation reveals a cable tray that is completely full and/or over-flowing with cables, chances are that the cable tray is in violation of both the National Electrical Code and OSHA requirements.

## Contact Us

For more information, pricing, or custom solutions, please contact us:

Website: <https://indzawo.co.za>

Email: [sales@indzawo.co.za](mailto:sales@indzawo.co.za)

Phone: +27 71 296 8473

Address: 22 Quantum Street, Midrand, 1685, Gauteng, South Africa

This document is for informational purposes only. Specifications subject to change without notice.

