

Cable trays pass through the roof of the building



Cable trays pass through the roof of the building



Cable tray is considered to be a system. It must provide continuous support for cables, and the electrical continuity of the cable tray system must be maintained.



Learn essential steps for cable tray installation on roof, including support systems, material selection, and environmental considerations for optimal performance and durability.



Used to address coaxial and lightning protection cables entering the building through the roof or wall. Custom roof flashing options available by request and/or specification.



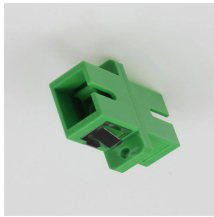
Used to address coaxial and lightning protection cables entering the building through the roof or wall. Custom roof flashing options available by request and/or ...



Trailing cables or badly made and installed cable trays can result in serious trip injuries or falls if near the edge of a roof. According to the Health and Safety Executive (HSE), falls from height are the biggest ...



PHP's cable tray support system is engineered to sustain various sizes of cable runs on your rooftop. PHP is the leader in cable tray support systems.



The ROOFPORT® RP range of fittings provides a weatherproof entry/exit point for pipes and cables as they pass through the all important weathering membrane. All have removable weathering cowls to ...



It should be mounted far enough off the floor or roof to allow the cables to exit through the bottom of the cable tray. If a strut is used for this purpose, mount the strut directly to the floor or roof and attach the ...



Yes, you can run electrical cable through the roof, but it must be done with caution and in accordance with local building codes. Ensure that the cable you choose is rated for outdoor use and ...



Roof-Pro's DPK supports can have pivoting legs and bases, and also allow for multiple building services runs (e.g. cable, duct and pipe) to be combined in the one support solution, making our supports the ...



Roof wire pass throughs are essential for routing electrical, telecommunications, and HVAC cabling from indoors to outdoor equipment or rooftop installations. This guide covers types, ...

Contact Us

For more information, pricing, or custom solutions, please contact us:

Website: <https://indzawo.co.za>

Email: sales@indzawo.co.za

Phone: +27 71 296 8473

Address: 22 Quantum Street, Midrand, 1685, Gauteng, South Africa

This document is for informational purposes only. Specifications subject to change without notice.

