

Calculation of fiber optic patching for 96-core optical distribution box



Overview

During this free webinar, we will discuss different fiber cables types, appropriate applications for each type, the mechanics of performing a Tier I test on fiber optic cable and calculating a loss limit for each component per ANSI/TIA-568 requirements. A tool that computes how many fibers fit in a circular bundle and splits them into user-defined segments for cable-assembly planning. Key Parameters: • Center Diameter, Fiber Diameter, Packing Efficiency, Section Count Calculation: Visualization: • Color-coded radial diagram with per-section. Belden offers several Fiber Patching Systems. Full patching platforms include FX ECX for LAN environments, FX UHD for high-density fiber channels and the DCX System used primarily in data centers where high amounts of fiber connections and density are the key requirements, as in optical. Unisol 4U 96 Port Rack Mount Optical Distribution Frame (ODF) is a high capacity, professional grade fiber termination solution designed for large scale fiber optic networks that demand superior organization, durability, and scalability. Engineered for performance in telecom, data center. UHDX ultra high-density fiber patch panels patch up to 144 LC fibers per RU to provide an inter-connect or cross-connect between

backbone horizontal cable and active equipment while minimizing rack space in a frame or cabinet. This guide will focus on elucidating the aspects of the fiber patch panel, its accessories, the work done with such a device, and how to.

Calculation of fiber optic patching for 96-core optical distribution board



This guide outlines the key steps and considerations for effective cable management in fiber optic systems.



The hallmark of this optical distribution frame is its ability to handle up to 96 fiber optic connections in a structured and organized format. The ODF supports various types of fiber optic adapters including ...



The author hopes that a clear understanding of the principles and fiber patch panel applications will prepare the reader to make rational and profound conclusions regarding using these ...



When planning an ODF, the width, i.e., the necessary space for fixing and routing patch cords, must be taken into account. For an ODF width of 600 mm, consider an additional two times the width of 300 ...



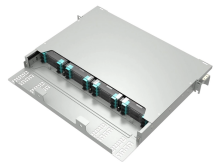
The 96 Core Slide Drawer Patch Panel 1U UHD MPO/MTP-LC 4 Cassette is a versatile solution for high-density fiber management in data centers and telecom networks.



This Patch panel can be equipped with MPO module box and splicing fiber methods, which are applied to high-density network solutions and splice fiber-distribution network solutions.



These high-density fiber patch panels allow a mix-and-match of e2XHD fiber and copper snap-in cassettes - up to 96 LC fibers or 48 copper ports per RU. Cassettes quickly snap in and pull out of ...



Optical fiber distribution frame (ODF) is used for the formation and distribution of the backbone optical cable in the optical fiber communication system, which can easily realize the connection, distribution ...



Utilize FSI's specialized fiber optic calculators for precise planning and design. Optimize your projects with our accurate, easy-to-use technical tools.



During this free webinar, we will discuss different fiber cables types, appropriate applications for each type, the mechanics of performing a Tier I test on fiber optic cable and calculating a loss limit for ...

Contact Us

For more information, pricing, or custom solutions, please contact us:

Website: <https://indzawo.co.za>

Email: sales@indzawo.co.za

Phone: +27 71 296 8473

Address: 22 Quantum Street, Midrand, 1685, Gauteng, South Africa

This document is for informational purposes only. Specifications subject to change without notice.

