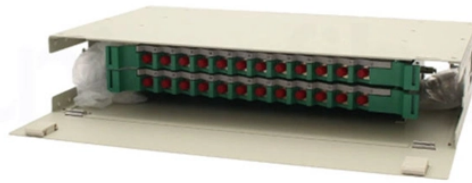


Can a PoE bridge be powered by a PoE switch



Can a PoE bridge be powered by a PoE switch



No matter which power adapter you use, the UDB Switch can't host a PoE++ device, such as the UNAS 2 —I tried, and the ...



If a non-PoE device is connected to a PoE switch, the switch will automatically detect that the device does not require power. It then disables PoE functionality on that port to prevent potential damage to ...



PoE power can be supplied from a PoE switch or from a power supply that is connected to a PoE "injector" that can be connected along the Ethernet cable. A PoE switch can supply PoE ...



This article demonstrates four different scenarios for a PoE Bridge with airMAX devices. This article covers different possible combinations using a NanoStation 5AC as an example.



A PoE Adapter can be used as an alternative power source if you do not have a PoE switch. It can also be used to offload connected devices after you've exceeded your switch's PoE Availability.



It doesn't pass through the POE just runs from POE. If you want to save a few bucks, for \$30 (and if they actually have them available), Unifi's Switch Flex Mini is 5 port POE powered without ...



PoE injectors bridge the gap between non-PoE switches and PoE-compatible devices, enabling devices like IP cameras, VoIP phones, and wireless access points to operate without the ...



Through an automated handshake between the Power Sourcing Equipment (PSE) — for example, a PoE switch — and the Powered Device (PD), ...



Yes, you can use a PoE switch to connect a non-PoE device to the network. When a new device is plugged into a PoE switch, the switch sends a very small amount of power to see if the ...



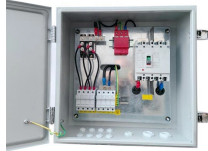
If you already have a poe switch that you can use then all you would need to buy is a decent poe injector/splitter. In this way, using one cable between levels, you will transfer both power ...



PoE injectors bridge the gap between non-PoE switches and PoE-compatible devices, enabling devices like IP cameras, VoIP phones, and wireless ...



No matter which power adapter you use, the UDB Switch can't host a PoE++ device, such as the UNAS 2 —I tried, and the NAS server failed to boot up fully. In other words, at best, you ...



If I understand your question - can a switch be plugged into another switch, then yes. If you expect to power that switch via POE, then no. The power draw would be too great. And I doubt ...

Contact Us

For more information, pricing, or custom solutions, please contact us:

Website: <https://indzawo.co.za>

Email: sales@indzawo.co.za

Phone: +27 71 296 8473

Address: 22 Quantum Street, Midrand, 1685, Gauteng, South Africa

This document is for informational purposes only. Specifications subject to change without notice.

