

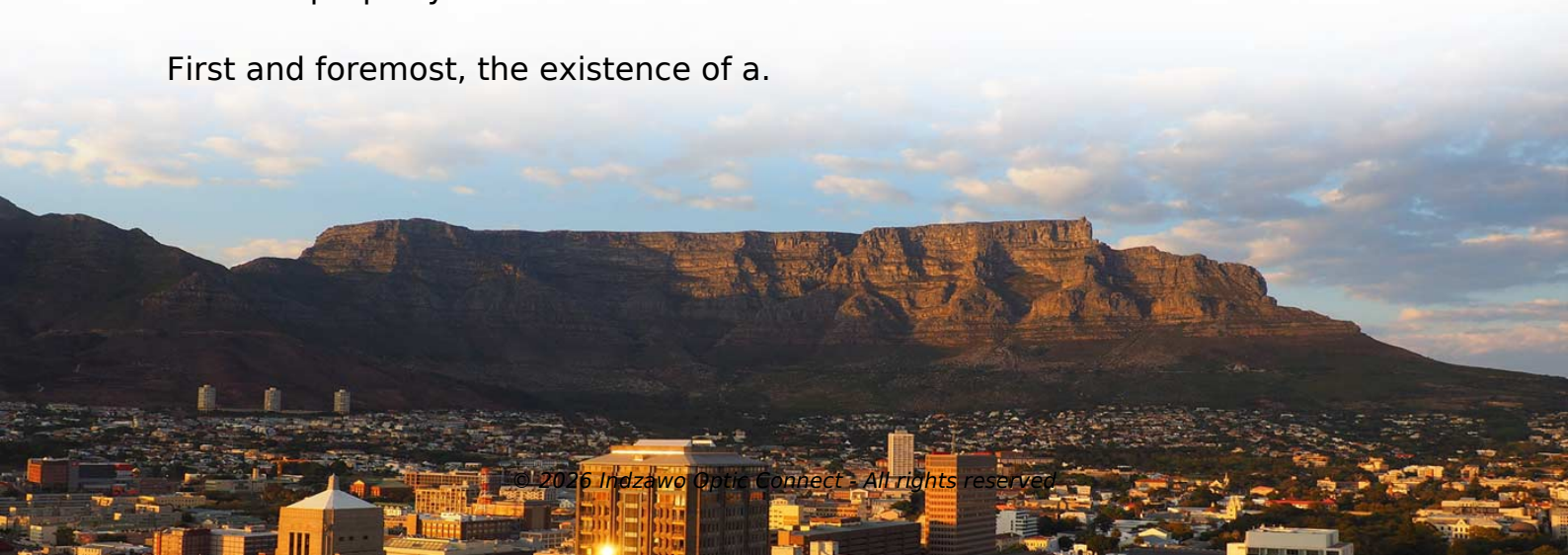
## Can a house be built next to a power distribution box



### Overview

Building a house directly under power lines is almost never allowed, and building near them requires clearing a gauntlet of legal restrictions, utility company approvals, and safety codes that most property owners underestimate. The primary impact of a utility easement on you as a property owner is. A utility easement is essentially a legal arrangement that allows utility companies to access a specific portion of your property for installing and maintaining services like water, gas, electricity, and telecommunications lines. This right is typically recorded on the property deed. But what does this mean for property owners?

First and foremost, the existence of a.



## Can a house be built next to a power distribution box



If you need to build something near a power line, utility pole, or electric facility on your easement, it is important to contact the city or utility company to understand and meet the building ...



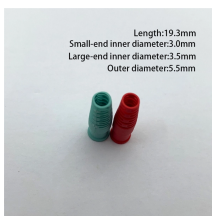
Can I still build my shed? This guide is here to demystify that dotted line, calm your fears, and empower you with the knowledge to understand your rights and obligations.



Accidental contact with power lines can lead to severe injury or death through electric shock. Buildings constructed too close to these lines pose risks for workers during construction, for maintenance ...



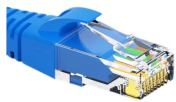
Yes, it's typically possible to build on a property easement, including utility easements. However, to avoid potential complications and maintain peace of mind, it is advisable not to build on ...



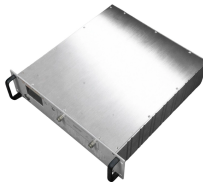
For permanent residential structures, the horizontal clearance to a typical distribution line often ranges from 7 to 13 feet, depending on the voltage and local utility standards.



Imagine this: you've found the perfect plot of land, the architectural plans are drawn up, and construction is ready to begin. But a silent, powerful ...



Imagine this: you've found the perfect plot of land, the architectural plans are drawn up, and construction is ready to begin. But a silent, powerful neighbor looms nearby—the overhead ...



Power line easement provides enough space between your home and the power lines for you to build onto your property. Generally, this spacing is typically about 10 feet for single phase ...



Municipalities may use part of your property or your neighbor's property to deliver water and power. But public utility companies need property easements to be compliant with real estate law.



Then, when deciding to bump out your house, put on an addition, dig a pool, or erect a fence, you find a legal easement running through your property. Learn more about easements, what ...



Building a house directly under power lines is almost never allowed, and building near them requires clearing a gauntlet of legal restrictions, utility company approvals, and safety codes ...

## Contact Us

For more information, pricing, or custom solutions, please contact us:

Website: <https://indzawo.co.za>

Email: [sales@indzawo.co.za](mailto:sales@indzawo.co.za)

Phone: +27 71 296 8473

Address: 22 Quantum Street, Midrand, 1685, Gauteng, South Africa

This document is for informational purposes only. Specifications subject to change without notice.

