

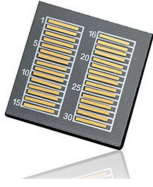
# Can an aggregation switch be configured with routing



## Overview

The aggregation switches are configured to act as multi-function EAPS nodes to provide L2 connectivity services. After EAPS and L2 connectivity is configured, additional L3 routing configuration can be added. By bundling multiple network connections into a single high-bandwidth link, aggregation switches help. This chapter covers the design recommendations for a data center design deployment consisting of a Cisco Nexus® 7000 Series Switch at the aggregation layer and a Cisco Nexus 5000 Series Switch at the access layer. The content of this chapter focuses on the aggregation layer design with the Cisco. Switch aggregation refers to the concept of consolidating multiple access layer switches into a single aggregation layer switch in a traditional three-tier network design. They ensure high performance due to the interfaces operating at speeds of 10 Gbps or 1 Gbps.

## Can an aggregation switch be configured with routing



The aggregation switches are configured to act as multi-function EAPS nodes to provide L2 connectivity services. After EAPS and L2 connectivity is configured, additional L3 routing configuration can be ...



Unlike core switches, aggregation switches can be either Layer 2 or Layer 3 switches. When choosing a Layer 2 switch, the routing and management policies must be handled by the core ...



The basic solution being proposed is to place one or more commodity Ethernet switches into the PoP as smart aggregation switches. Those switches would connect the CE devices and/or access devices to ...



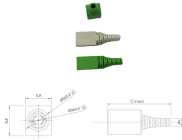
This chapter covers the design recommendations for a data center design deployment consisting of a Cisco Nexus® 7000 Series Switch at the aggregation layer and a Cisco Nexus 5000 Series Switch at ...



The new generation switches can be used in service provider networks as aggregation or transport switches. They ensure high performance due to the interfaces operating at speeds of 10 Gbps or 1 ...



A Layer 3 switch often works as the core or aggregation device, connecting VLANs, departments, servers, and external network gateways. What Is a Layer 3 Switch? A Layer 3 switch is ...



Configuration involves setting up VLANs, QoS policies, security rules, and routing protocols. This process typically requires technical expertise and a thorough understanding of ...



In this way, the aggregation and access switches can go online in plug-and-play mode.



When a Layer 2 switch is used as the aggregation switch, routing and management policies are determined by the core switch rather than the aggregation switch. This article wraps up ...



Q: Can a Fiber Aggregation Switch perform local routing? A: Indeed, certain types of Fiber Aggregation Switches can perform local routing in addition to their primary duty as data ...

## Contact Us

For more information, pricing, or custom solutions, please contact us:

Website: <https://indzawo.co.za>

Email: [sales@indzawo.co.za](mailto:sales@indzawo.co.za)

Phone: +27 71 296 8473

Address: 22 Quantum Street, Midrand, 1685, Gauteng, South Africa

This document is for informational purposes only. Specifications subject to change without notice.

