

Cold connector for melting end machine



Overview

These cables and connectors are designed to withstand the extreme heat generated during the steelmaking process and efficiently carry high electrical currents. Next, melt the heat-shrink insulation and enclosed solder to add even more stiffness and strength. Voltage For use where water and contaminants are a concern, the. There are numerous melting connectors to suit different applications. SolderSleeve splicing devices, which can be used to make sealed or unsealed splices, solder, insulate, encapsulate, and strain, relieve a wide range of wire sizes in a single step. After crimping normally, apply heat to activate the heat shrink. The world counts on connectivity.

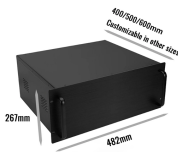
Cold connector for melting end machine



First, twist your wires together and crimp them in the connector. Then, apply a heat gun to shrink the insulation and hold wires securely under tension and vibration.



Get quality melting connectors that offers strong and stable connections. They are ideal for businesses across the globe looking to optimize efficiency.



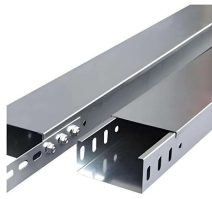
TE Connectivity and Chemelex, which are unrelated companies, both sell products under the RAYCHEM brand. Please review the products offered by each company and select the appropriate ...



Crimp and Solder Seal terminals feature a band of solder above the connection. After crimping normally, apply heat to activate the heat shrink. The low melt solder will flow into the connection.



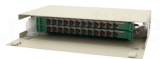
SolderSleeve splicing devices, which can be used to make sealed or unsealed splices, solder, insulate, encapsulate, and strain, relieve a wide range of wire sizes in a single step. ...



Choose from our PCS standard 5, 8 and 12 zone cables or mold end connectors. Our specialty cables have a variety of split combination or conversion configurations to connect the most popular hot ...



Water cooled cables and connectors are crucial components in the steel manufacturing industry, specifically in the melting shop. These cables and connectors are designed to withstand the extreme ...



Melt Pressure Accessories from ONEhalf20.



Milnec's soldering station kit provides a complete solution for professionally terminating every Milnec PS or HS Series connector to stranded or solid core wire.



Get this comprehensive kit of 600 heat shrink wire connectors. It includes ring, fork, spade, and heat shrink butt connectors in a proper ratio to meet various needs. The connectors are made of premium ...

Contact Us

For more information, pricing, or custom solutions, please contact us:

Website: <https://indzawo.co.za>

Email: sales@indzawo.co.za

Phone: +27 71 296 8473

Address: 22 Quantum Street, Midrand, 1685, Gauteng, South Africa

This document is for informational purposes only. Specifications subject to change without notice.

