

Color of security inspection distribution box



Overview

Businesses are required to follow OSHA regulations to keep their employees safe from a variety of hazards in numerous different environments. In fact, the Occupational Safety and Health Administration h.



Color of security inspection distribution box



Detailed guide to locating, safely accessing, and visually testing your septic distribution box to diagnose flow issues and ensure drain field health.



The document provides a 16 item checklist for inspecting a main ...



With color-coding, it's easier to find designated critical zones and control points and to reduce wasted time. 5S Color-coding goes beyond cleaning and material handling tools.



Walmart reviews SCS facility audit reports suppliers submit and assigns each facility a color rating based on the results of the audit. The color rating determines whether the facility meets Walmart's ...



The color represents a specific period of the year (1st quarter, 2nd quarter, etc.) during which the inspection is valid. This list provides the color code schedule applicable for each quarter.



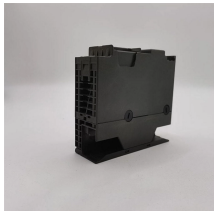
Yellow. Yellow shall be the basic color for designating caution and for marking physical hazards such as: Striking against, stumbling, falling, tripping, and "caught in between."



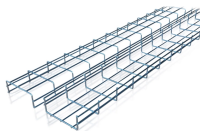
OSHA's color coding system is a powerful tool designed to help employers alert, inform, and guide workers in a clear and standardized way. When properly implemented, these safety colors ...



Trusted for decades, our products enable first responders, facility managers, security teams, maintenance crews, and emergency personnel to access secured areas quickly, safely, and with full ...



These color-coded signs and markings allow people to immediately determine the type of safety hazard in the area, even if they are too far away to read any actual writing.



Throughout the document, the icons appear next to each practice and correspond to the identified groups. Click on an icon to review all practices that pertain to the specified industry. Color Code: A ...



The safety department will ensure to get the correct colors for the rollback out to each jobsite. We will also conduct an inspection of all equipment and trucks on the jobsite that same day as well. If you ...

Contact Us

For more information, pricing, or custom solutions, please contact us:

Website: <https://indzawo.co.za>

Email: sales@indzawo.co.za

Phone: +27 71 296 8473

Address: 22 Quantum Street, Midrand, 1685, Gauteng, South Africa

This document is for informational purposes only. Specifications subject to change without notice.

