

## Combined distribution boxes



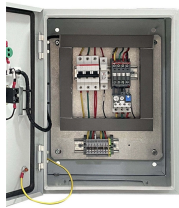
## Combined distribution boxes



Our DC combiner boxes offer users the possibility to integrate short-circuit and overvoltage protection, as well string monitoring solutions (I,V, T and SPD and switch isolator status), for PV systems using ...



Officially licensed by the United States Postal Service, Salsbury Industries offers a wide variety of Cluster Mailboxes to accommodate your centralized mail delivery needs.



Learn the key differences between PV combiner boxes and distribution boxes, including functions, protection, installation tips, and GRL product examples.



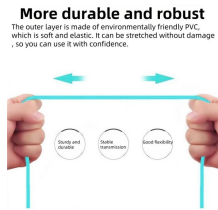
Efficient, flexible modular zone distribution for power, voice, and data under raised floors.



Learn the differences between distribution boxes and combiner boxes in solar PV systems, including their functionalities, components, applications, and key differences.



Explore the intricacies of the Combined Distribution Box, its significance, and how it streamlines electrical distribution.



This is where the solar distribution box, universally known in the industry as the PV combiner box, plays a highly critical role. Without this central hub, solar systems run the risk of ...



Quality and Custom Utility Floor Boxes for Convention Centers, Malls, Stadiums, Apartments, and more.



Our boxes are made of durable, high performance materials and with a variety of shapes. The high-quality box bodies are keyed to prevent external impact. Reliable and robust solutions for high ...



Solar Combiner Box, Briidea 4-String PV Combiner Box with 10A Circuit Breakers & Lightning Arrester, IP65 Waterproof, for On-Grid & Off-Grid Solar Panel Systems

## Contact Us

For more information, pricing, or custom solutions, please contact us:

Website: <https://indzawo.co.za>

Email: [sales@indzawo.co.za](mailto:sales@indzawo.co.za)

Phone: +27 71 296 8473

Address: 22 Quantum Street, Midrand, 1685, Gauteng, South Africa

This document is for informational purposes only. Specifications subject to change without notice.

