

Comparison of IP68 ratings for integrated container racks



Overview

This guide covers the full IP rating chart, explains what every digit and letter means, compares IP65 vs IP66 vs IP67 vs IP68, shows NEMA equivalents, and gives specific recommendations for actuator applications. Available in both plastic and aluminum material options, Polycase's IP68-rated enclosures come in a variety of sizes and styles, including. Industrial enclosures exposed to dust, rainwater, or submerged environments risk critical failures – from dust-clogged heat sinks to catastrophic short circuits. " Whether you're selecting a linear actuator for an outdoor installation, choosing electronics for a marine environment, or specifying equipment for a. IP stands for Ingress Protection (also sometimes called Ingress Rating or Ingress Level), defined under the IEC 60529 standard. The "IP" is followed by two digits (sometimes extended with letters), denoting protection levels against solid ingress (dust, particulates) and liquid ingress (water. The IEC has developed the ingress protection (IP) ratings, which grade the resistance of an enclosure against the intrusion of dust or liquids Electric and electronic equipment deteriorate or malfunction when water or dust enters the device. IP67: Dust-tight and protected against temporary immersion (1 meter for 30 minutes).

Comparison of IP68 ratings for integrated container racks



In many industrial contexts, an IP67 may suffice (lower cost). Sometimes, hybrid solutions (IP68 for connectors + IP66 for enclosures, etc.) are used depending on specific exposure. ...



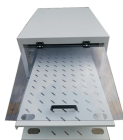
Simply put, IP67 is a standardized specification, while IP68 is a customized specification. Engineers must require manufacturers to provide clear testing conditions and verification reports...



IEC 60529 has been developed to rate and grade the resistance of enclosures of electric and electronic devices against the intrusion of dust and liquids. It also rates how easy it is for individuals to access ...



Understanding IP Ratings for Industrial Enclosures: From IP54 to IP68 - What Does Your Equipment Really Need? Industrial enclosures exposed to dust, rainwater, or submerged ...



The purpose of this Bulletin is to help users and manufacturers understand how NEMA enclosure ratings and Ingress Protection (IP) ratings apply to liquid-tight flexible metal conduit ...



IP68 enclosures are the toughest of all enclosures on the IP rating scale. Using a gasket seal design, they offer weatherproof, outdoor-grade protection against everything from dust to prolonged ...



Understand the difference between IP67, IP68, and IP69K. Learn why IP68 is not automatically IP69K and how to specify connectors for washdown vs. submersion.



Rack enclosures are rated based on their suitability for certain applications and the degree to which they protect equipment. Each type of enclosure is given a number based on its ability to withstand ...



This guide covers the full IP rating chart, explains what every digit and letter means, compares IP65 vs IP66 vs IP67 vs IP68, shows NEMA equivalents, and gives specific ...



For over 20 years customers have relied on SLAYSON ® to deliver the industries most comprehensive range of NEMA 6, NEMA 6P and IP67 / IP68 electrical enclosures.

Contact Us

For more information, pricing, or custom solutions, please contact us:

Website: <https://indzawo.co.za>

Email: sales@indzawo.co.za

Phone: +27 71 296 8473

Address: 22 Quantum Street, Midrand, 1685, Gauteng, South Africa

This document is for informational purposes only. Specifications subject to change without notice.

