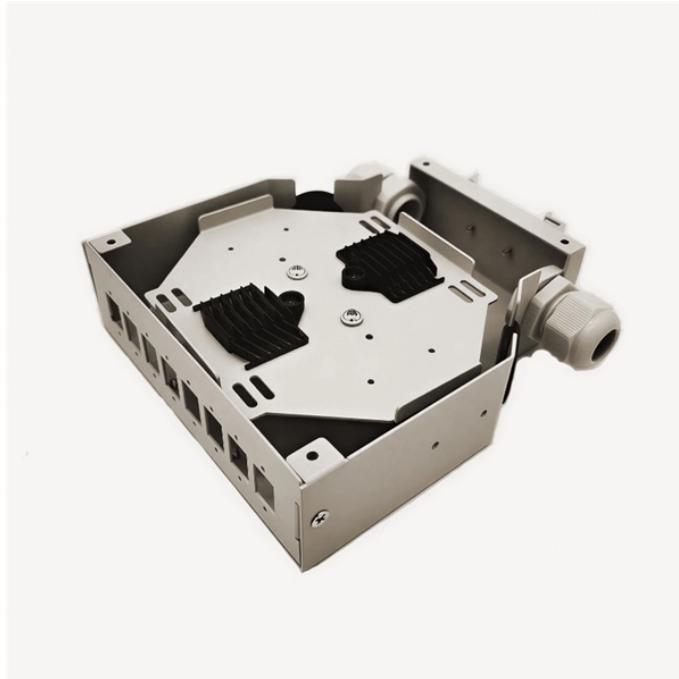


# Configuration of an 8-Port All-Optical Switch



## Overview

This switch provides 8 x 10/100/1000BASE-T ports, ports 3 to 8 PoE/PoE+ supported, 2 x 1G/2. \*Images are for illustrative purposes. Actual product appearance and specifications may vary. Plug and play ensures simplicity and convenience. Your results may vary due to. The NSSB Series high-speed fiber optic switch features ultra-fast switching, exceptionally low optical loss, and high optical power handling in a turnkey rack-mount package with high-speed TTL SMA control inputs. Switching is achieved through a patented electro-optical configuration that delivers. Use high-quality photoelectric integrated modules to provide good optical and electrical characteristics Ensure reliable data transmission and long working life Support full-duplex or half-duplex mode with auto-negotiation capability The network port supports automatic cross-recognition Built-in. Do you have a question about the ONV-POE33108PFM and is the answer not in the manual?

Note CONSOLE 8-Port 10/100/1000Mbps + 2G SFP PoE Managed Switch 8-Port 10/100/1000Mbps + 2G SFP PoE Managed Switch IPS33108PF & ONV-IPS33108PFM PoE switch, PoE switch or switch in short in below. 115200,N,8,1.

Various port combinations, rate increase, installation in a concealed telecommunication box, recommended for indoor use, aesthetically pleasing design, and security 1 x RJ45 console port 56. 5 Mpps 76 Gbps 210 mm x 235 mm x 55 mm (8. ) -40°C to +70°C (-40°F to +158°F) 3. The use of an 8 Port SFP Optical Switch becomes crucial in this regard since it offers unmatched flexibility, scalability and efficiency.

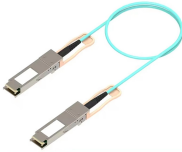
## Configuration of an 8-Port All-Optical Switch



AXIS D8308 Fiber Aggregation Switch is easy to install using standard Axis tools as AXIS IP Utility and AXIS Device Manager. It comes with an individual password, easy to use setup wizard, and a ...



Switching is achieved through a patented electro-optical configuration that delivers clean, ripple-free transitions, ensuring continuous operation for over 25 years with non-mechanical, ultra-high reliability.



Layer 2 network switch designed for video data transmission 8 x 10/100/1000 ...



This switch provides 8 x 10/100/1000BASE-T ports, ports 3 to 8 PoE/PoE+ supported, 2 x 1G/2.5G/5GBASE-T ports, ports 1 to 2 PoE/PoE+ supported, 2 x 1GE/10GE SFP+ uplink ports, rich ...



ONV-POE33108PFM has additional web management functions. It supports enhanced management, including SSL,SSH,TFTP, SNMP,System Log, Web GUI, Port Mirro, and so on.



Ports: You can view the connection status of all the ports on the switch, as well as set port connection speed, flow control, maximum frame length, and power control mode.



Layer 2 network switch designed for video data transmission 8 x 10/100/1000 Mbps ethernet port, 1 x 10/100/1000 Mbps uplink ethernet port and 1 x 10/100/1000 Mbps uplink SFP port



It provides IPv6/IPv4 dual stack management and built-in L2/L4 Gigabit switching engine along with 8 10/100/1000BASE-T ports featuring 30-watt 802.3at PoE+ and 2 additional 100/1000BASE-X SFP ...



Gigabit 2 Optical Port 8 Electrical Port Industrial Ethernet Switch (GL-7028G Series) Use high-quality photoelectric integrated modules to provide good optical and electrical characteristics Ensure reliable ...



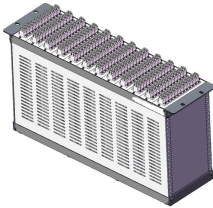
This article reviews essential features as well as benefits and technical specifications associated with an 8 port sfp optical switch, thus giving ...



Provides hardware information and multiple setup options for connecting your switch.



This article reviews essential features as well as benefits and technical specifications associated with an 8 port sfp optical switch, thus giving you a complete idea of how it works in ...



AXIS D8308 Fiber Aggregation Switch is easy to install using standard Axis tools as AXIS IP Utility and AXIS Device Manager. It comes with an individual password, ...

## Contact Us

For more information, pricing, or custom solutions, please contact us:

Website: <https://indzawo.co.za>

Email: [sales@indzawo.co.za](mailto:sales@indzawo.co.za)

Phone: +27 71 296 8473

Address: 22 Quantum Street, Midrand, 1685, Gauteng, South Africa

This document is for informational purposes only. Specifications subject to change without notice.

