

Connect the cable to the distribution box



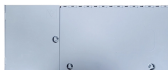
Connect the cable to the distribution box



Terminal connection: Connect the input and output lines to the terminals in the distribution box in accordance with the principle of “phase wire to phase wire terminal, zero wire to ...



Phase 3's Powersafe Sequential Mating Box controls the connection sequence of incoming / outgoing high current cable connections. The sequence ensures that the Earth connection is made first and ...



Find out how to properly wire an electrical panel box with a comprehensive diagram and step-by-step instructions.



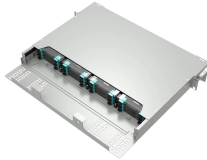
Connect the outgoing cables to their respective circuit breakers or fuses. Tighten the cable connections securely using the appropriate terminals or busbars.



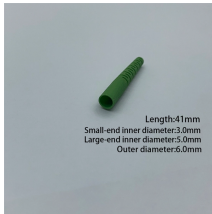
Learn how to install a distribution box safely and correctly. Covers wiring, placement, standards, and expert tips for a compliant setup.



Learn how to connect a distribution box with this easy-to-follow, step-by-step guide. From tools and materials needed to common installation mistakes and solutions, this comprehensive article will ...



Learn how to wire a distribution box step by step! This video shows real on-site footage of electrical installation, demonstrating safe and standardized wiring methods used by professionals.



You connect a coaxial cable to a distribution box by putting on the right connector and making sure it fits the correct port. Always use the right tools when you install coaxial cable. If you ...



Hey, in this article we are going to see the Single Phase Distribution Box Wiring Diagram and Connection Procedure. A distribution board or distribution box is where the main power supply is ...



If the depth of the distribution box is sufficient, it is recommended to choose the method of routing the wires from behind the circuit breaker as shown in the photo.

Contact Us

For more information, pricing, or custom solutions, please contact us:

Website: <https://indzawo.co.za>

Email: sales@indzawo.co.za

Phone: +27 71 296 8473

Address: 22 Quantum Street, Midrand, 1685, Gauteng, South Africa

This document is for informational purposes only. Specifications subject to change without notice.

