

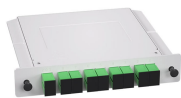
## Connecting a switch to a PoE router



## Connecting a switch to a PoE router



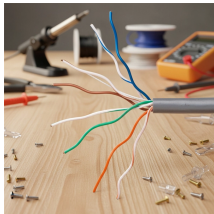
Learn how to wire a PoE switch with a comprehensive diagram, helping you set up Power over Ethernet connectivity for your network devices.



Find out how to minimize cabling by using POE switches on your network. Get helpful tips and best practices in our free guide, written by SCW's installation experts.



At this point, you can connect a PoE switch to the LAN port of the router, and then use an Ethernet cable to connect the Uplink port (or regular port) of the PoE switch to the Uplink port (or ...



Power over Ethernet (PoE) Switch are at the core of the modern-day network configurations, to enable an effortless integration of both the power and ...



There are mainly two options for connect ExpertWiFi EBA63 with router, switch, or gateway, you can select either of the options. 1. Power up ExpertWiFi EBA63 by connecting the PoE ...



First, connect the main PoE switch to a router or a network switch using an Ethernet cable. Second, connect the other PoE switches to the core switch using individual Ethernet cables.



We can use TL-POE150S and TL-POE10R to expand the network for the place where power line can not reach or there is no outlet.



In this video, we dive into how to use the TP-Link TL-POE10R POE Splitter to supply power and LAN connectivity to a WiFi router, modem, or access point from a CCTV system POE switch.



Power over Ethernet (PoE) Switch are at the core of the modern-day network configurations, to enable an effortless integration of both the power and data channels. In this article ...



If the switch is connected to a WiFi router or access point and to the Internet, you can use the NETGEAR Insight app to discover the switch in your network, register the switch with NETGEAR, ...



In this guide, we'll walk you through the process of integrating a TP-Link TL-POE10R POE Splitter to power and connect a WiFi router, modem, or access point to a CCTV system's POE switch.

## Contact Us

For more information, pricing, or custom solutions, please contact us:

Website: <https://indzawo.co.za>

Email: [sales@indzawo.co.za](mailto:sales@indzawo.co.za)

Phone: +27 71 296 8473

Address: 22 Quantum Street, Midrand, 1685, Gauteng, South Africa

This document is for informational purposes only. Specifications subject to change without notice.

