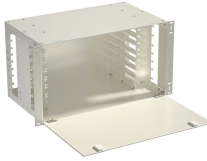


## Consulting about access switch PAM4



## Consulting about access switch PAM4



Forward error correction (FEC) is used to correct channel errors in PAM4 links and must be considered in PAM4 receiver (Rx) testing. We can help you address these new PAM4 physical layer test ...



In this passage, you will explore PAM4 modulation, its differences from NRZ signaling, its benefits, and its applications.



es PAM-4 Design Challenges and the Implications on Test Application Note Ever-increasing demands for a connected world with instant data access continues to drive Ethernet ...



Understand PAM4 signaling basics and how it differs from NRZ. Expert insights on testing challenges, eye diagrams, and validation for 400G/800G Ethernet.



This paper explains how 224 Gbps PAM4 systems differ from previous generations in terms of interconnects, what technologies and methodologies enable 224 Gbps PAM4 interconnects, and ...



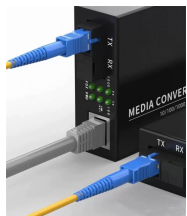
This application note explains PAM4 theory and its operation. It describes NRZ and PAM4 fundamentals, standards using PAM4 coding schemes, and CEI-56G Interconnect reaches and ...



In copper, PAM4 uses four voltage levels to represent two-bits of data per symbol. By encoding two or more bits per symbol, PAM increases the data rate without increasing the required channel bandwidth.



This Pulse-Amplitude Modulation 4-Level (PAM4) application note explains PAM4 theory and operation while introducing the Intel® Stratix® 10 TX device capability and the realization of 57.8 Gbps data ...



Since CTLEs are passive filters, they're no different in PAM4 systems than in PAM2-NRZ systems, but with four symbol levels, the decisions that PAM4 DFEs feedback are more complicated.



Note that proper comparison of PAM5 and PAM4 would require specific proposals for PAM5 implementation, but it is unlikely that such comparison will be more favorable to PAM5

## Contact Us

For more information, pricing, or custom solutions, please contact us:

Website: <https://indzawo.co.za>

Email: [sales@indzawo.co.za](mailto:sales@indzawo.co.za)

Phone: +27 71 296 8473

Address: 22 Quantum Street, Midrand, 1685, Gauteng, South Africa

This document is for informational purposes only. Specifications subject to change without notice.

