

Copper components of the distribution box



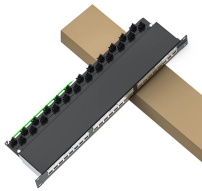
Copper components of the distribution box



Through standardized design and a strict conductive path layout, terminal block copper distribution block distributes power from the busbar or ...



I've seen these nightmares unfold when engineers treat pan assemblies and busbars as separate components rather than an integrated system. MCCB pan assemblies and busbars work ...



Discover how E-abel designs custom copper busbar cabinets and control boxes as an integrated power distribution control system. Learn how this ...



Sufficient knockout features in box wrapper and gland plate ensure easy routing of cables. Easy to remove knockouts and gland plate with easily breakable features reduce installation time.



Through standardized design and a strict conductive path layout, terminal block copper distribution block distributes power from the busbar or power cabinet to multiple branches, including ...



I've seen these nightmares unfold when engineers treat pan assemblies and busbars as separate components rather than an integrated system. MCCB pan assemblies and busbars work ...



Introduction For procurement professionals, electrical contractors, and project managers, choosing the right Distribution Box (DB Box) is a critical decision that directly impacts system safety, reliability, and ...



CommScope offers a complete line of easy-to-use access terminals, copper and fiber splice closures, patch closures and accessories to speed deployment.



Busbars are produced in a variety of shapes, including flat strips, solid bars and rods, and are typically composed of copper, brass or aluminium as solid or hollow tubes. Some of these shapes allow ...



The choice between copper and aluminum components isn't just about cost - it's a critical safety decision. This comprehensive guide cuts through the technical jargon to explore why copper ...



Discover how E-abel designs custom copper busbar cabinets and control boxes as an integrated power distribution control system. Learn how this synergistic solution improves thermal ...



The fuse is a protective device that is used to protect the electrical devices from excessive current and also prevent the short circuit in the system. The fuses and isolating switches ...



A busbar box is an enclosed unit that houses busbars—conductive bars that distribute electric power. Typically made of copper or aluminum, busbars efficiently conduct electricity within ...

Contact Us

For more information, pricing, or custom solutions, please contact us:

Website: <https://indzawo.co.za>

Email: sales@indzawo.co.za

Phone: +27 71 296 8473

Address: 22 Quantum Street, Midrand, 1685, Gauteng, South Africa

This document is for informational purposes only. Specifications subject to change without notice.

