

Core Switch of E-Government External Network



Overview

As a cornerstone of China's digital governance, the National Electronic Government External Network offers a unified platform for public service delivery, information sharing, and interdepartmental collaboration. With over a decade of expertise in national e-government projects, Ruijie has. Sr. □□ Key Differences Access vs Edge: Access = connects internal end devices. Edge = connects the internal. The network controller, authentication server, and intelligent O&M analysis platform (iMaster NCE-CampusInsight) are deployed on the e-Government cloud to centrally manage and ensure the security of different government agencies. Connection and interconnection of information systems (e.

Core Switch of E-Government External Network



Sections 1 and 2 of the DCPG provides guidance for the end-to-end life cycle processes of the connection requirement.



To support Pingdingshan's expanding e-government services and align with national IPv6 directives, Ruijie provided a comprehensive network upgrade centered on its high-performance core routers ...



Ultimately, the e-government's portal will turn into a multi-channel, one-stop-shop for all government e-Services, and will support various access and delivery channels (e.g. Web, SMS, Kiosks, etc.).



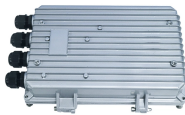
The e-Services are rendered by the States through common delivery platform seamlessly supported by core Connectivity Infrastructure such as State Wide Area Network (SWAN).



Reviewing all changes proposed to external connections that involve VA network resources to ensure the changes are viable from technical, security and privacy standpoints;



Core Switch → Needed in large enterprises, campuses, or data centers where a high-speed backbone is critical.



The objective of these actions is to enhance the performance of DoD network infrastructures (e.g., IP-based) and aggressively eliminate costly legacy network technologies (e.g., time-division ...



ISE is a core component of SD-Access, providing network access control by dynamically mapping users and devices to networks and security groups, simplifying end-to-end policy enforcement.



To enhance data integration identify the enterprise core common data entities which will be used across the institution for data sharing e.g. Citizen's demographic profile, name, address etc.



In the small government office network solution, a single government agency has an independent office campus, and the VLAN networking policy is used. A two-layer architecture (access layer + core ...

Contact Us

For more information, pricing, or custom solutions, please contact us:

Website: <https://indzawo.co.za>

Email: sales@indzawo.co.za

Phone: +27 71 296 8473

Address: 22 Quantum Street, Midrand, 1685, Gauteng, South Africa

This document is for informational purposes only. Specifications subject to change without notice.

