

## Cost of a 1 6T Air-Cooled Switch



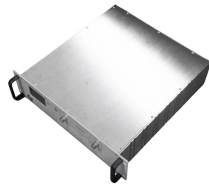
### Overview

The DS6000 is a 3RU, 64-port x 1.6TbE data center switch for traditional air-cooled data center installations. 10, 2025 (GLOBE NEWSWIRE) -- Celestica Inc. (TSX: CLS) (NYSE: CLS), a leader in design, manufacturing, supply chain and platform solutions for the world's most innovative companies, today introduced two new 1.6TbE switches. As a quick recap, the new Broadcom Tomahawk 6 has up to 102.2T Tomahawk 5 co-packaged optics switch. 6T-2xFR4H is a high-speed, low-latency optical transceiver designed for 1.6T. It supports link distances up to 2km over single-mode fiber (SMF) using a 2xFR4 architecture with two LC duplex ports, each carrying 4x200G PAM4. Alpha Networks Inc. 6 TE interfaces—doubling.

## Cost of a 1 6T Air-Cooled Switch



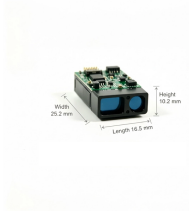
Nokia's 7220 IXR-H6 line supports both air- and liquid-cooled designs and offers a choice between SR Linux and Community SONiC for operators seeking open-networking options.



The DS6000 is a 3RU, 64-port x 1.6TbE data center switch for traditional air-cooled data center installations. The DS6001 is a 2OU, 64-port x 1.6TbE switch offering a hybrid cooled solution ...



The DS6000 is a 3RU, 64-port x 1.6TbE data center switch for traditional air-cooled data center installations. The DS6001 is a 2OU, 64-port x 1.6TbE switch offering a hybrid cooled solution ...



For the sample orders, if it met with the Free Shipping policy, then shipping and delivery cost would be covered by NADDOD. But if it is not, then the shipping and delivery cost and additional charges in ...



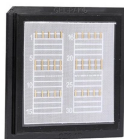
The smaller footprint and higher efficiency compared to legacy air-cooling lowers the burden on footprint planning and energy consumption in data centers. The fully liquid-cooled design ...



We spotted Broadcom Tomahawk 6 102.4T switches from several vendors at Computex 2025 in 64-port 1.6TbE configurations



Achieving the same GPU count with the prior generation of silicon would have required approximately 2,500 switches — a 3.3× reduction in switch count that translates directly into lower ...



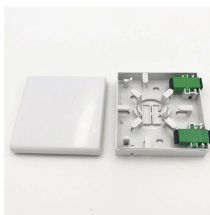
Nokia's 7220 IXR-H6 line supports both air- and liquid-cooled designs and offers a choice between SR Linux and Community SONiC for operators ...



The DS6000 is a 3RU, 64-port x 1.6TbE data center switch for traditional air-cooled data center installations.



For the new generation of switches with a single channel of 224GB/s, the power consumption of 800G/1.6T optical modules is usually more than 16W, and if the connection scheme ...



Larger cooling fins increase costs, rack footprints, energy consumption, and acoustic levels, presenting integration challenges for data centers. The 1.6T switch from Alpha Networks ...

## Contact Us

For more information, pricing, or custom solutions, please contact us:

Website: <https://indzawo.co.za>

Email: [sales@indzawo.co.za](mailto:sales@indzawo.co.za)

Phone: +27 71 296 8473

Address: 22 Quantum Street, Midrand, 1685, Gauteng, South Africa

This document is for informational purposes only. Specifications subject to change without notice.

