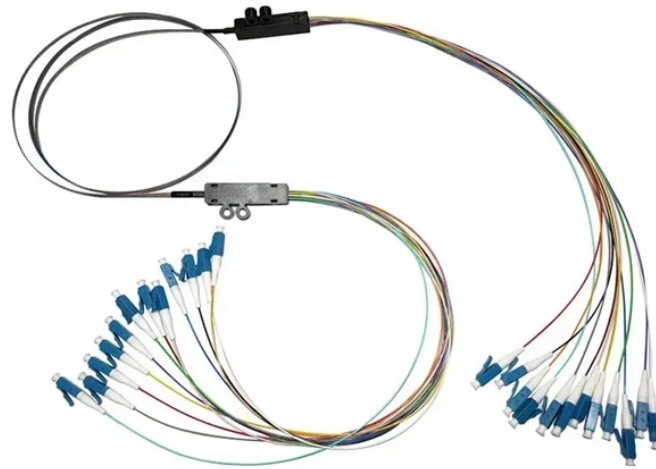


## Customization Process for Remote Monitoring Type Fiber Optic Junction Boxes for Campus Networks



### Overview

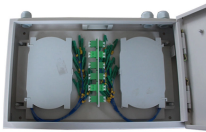
Choosing the right fiber optic terminal box is less about buzzwords and more about matching physics and field reality to your site: where the box will live, how many cores you need now and later, how technicians will access it, and what level of environmental and mechanical. Choosing the right fiber optic terminal box is less about buzzwords and more about matching physics and field reality to your site: where the box will live, how many cores you need now and later, how technicians will access it, and what level of environmental and mechanical. Clients facing the exact demands of specialized environments—whether it's ultra-low-latency AI clusters, space-constrained military installations, or high-density telecom exchange points need more than off-the-shelf cabling. At FS, we place the customer at the heart of our operations. We are. Transform your fiber enclosure vision into reality with our end-to-end OEM/ODM solutions - precision-engineered for mission-critical telco deployments. Beat project deadlines with our streamlined manufacturing: High-volume output, rapid sample-to-production turnkey, and 99.7% on-time

delivery track. Fiber optic network design refers to the specialized processes leading to a successful installation and operation of a fiber optic network. A Fiber Termination Box, also known as an optical termination box (OTB), is a compact, specialized enclosure designed for the organization, termination, splicing, and protection of fiber. In every fiber build, there's a quiet place where the glass path meets the real world: the fiber optic terminal box. It's where delicate strands are protected, splices are routed, connectors are exposed for patching, and future changes are made painless—or painful.

## Customization Process for Remote Monitoring Type Fiber Optic Junction



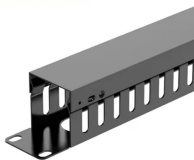
For premises and campus cable plants, OM3 type laser-optimized 50/125 multimode fiber is probably the best choice for any multimode OSP runs, as its lower attenuation and higher bandwidth will make ...



Discover how to select the best fiber optic terminal box for data centers, campus fiber backbones, outdoor FTTH networks, and enterprise fiber systems. Learn how environment, capacity, ...



By understanding the types, components, installation process, advantages, and maintenance practices associated with fiber optic distribution boxes, network administrators can ...



Navigate our comprehensive collection of fiber optic products with the assistance of our experienced team. Our knowledgeable experts are ready to discuss product specifics, confirm compatibility, and ...



In addition to our wide range of catalog (ASAP) Fiber Optic Cable Assemblies, Glenair offers turnkey, build-to-print fiber optic cable harnesses, breakout, and junction box assemblies.



In this blog, we will discuss the two types of fiber optic cables and the role of a simple yet essential piece of equipment in the fiber laying procedure- the, the Fiber Termination Box, or FTB.



APT offers custom distribution boxes for electrical and fiber optic systems, enhancing safety, flexibility, and space utilization.



Discover how FS end-to-end process, from in-depth consultation and precision design to rigorous validation, and then delivers tailored MTP®, standard, armored, and industrial fiber jumpers ...



A Fiber Termination Box, also known as an optical termination box (OTB), is a compact, specialized enclosure designed for the organization, termination, splicing, and protection of fiber optic ...



From standardized fiber optic closures to custom-designed distribution boxes, Fibermint delivers reliable connectivity protection through precision engineering and client-focused manufacturing.

## Contact Us

For more information, pricing, or custom solutions, please contact us:

Website: <https://indzawo.co.za>

Email: [sales@indzawo.co.za](mailto:sales@indzawo.co.za)

Phone: +27 71 296 8473

Address: 22 Quantum Street, Midrand, 1685, Gauteng, South Africa

This document is for informational purposes only. Specifications subject to change without notice.

