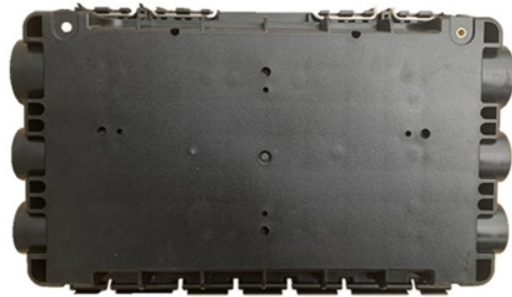


Data Center Using Red Light Source Intelligence



Data Center Using Red Light Source Intelligence



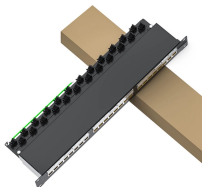
In the following subsections, we compare four distinct architectures for intra-data center co-packaged optical interfaces based on the use of external vs. integrated light sources as well as multi ...



This project will tackle the technical obstacles and tools needed to enhance data analysis capabilities at X-ray and neutron source user facilities. It aims to address challenges in ...



As data centers continue to evolve, the role of smart lighting technologies will become increasingly important. Integrating lighting systems with building management platforms enables real ...



Explore advanced, privacy-preserving red-light violation detection using computer vision, ML, edge computing, and cryptographic protocols for robust traffic enforcement.



Discover expert lighting design strategies for data centers that enhance efficiency and innovation.



The Company designs, manufactures, and sells optical components, primarily in the form of planar Lightwave circuits (PLC), artificial intelligence (AI) and LiDAR technologies on silicon-based ...



In this article, we explore the journey of an R& D Engineer focused on developing efficient, sustainable, and intelligent lighting systems. The exciting nexus of business intelligence and data analytics is ...



Live light monitoring - full control of the complete lighting system Access to all relevant operating data of the lighting system, in particular active information on necessary maintenance (predictive maintenance).



Explore how sustainable lighting systems are reshaping energy use, design, and efficiency in modern data center environments.



Automate data collection, reduce risk, and simplify reporting with our AI-driven SaaS platform for supply chain compliance and sustainability programs.



Real-time analytics in data centers isn't a buzzword—it's a design tool. If you've ever tried to trace energy spikes or explain why rack zones stay dark after hours, you already know the value of ...



Data centers don't sleep, and neither should their lighting systems — but that doesn't mean lights need to be on at full power 24/7. Adaptive lighting systems with AI offer a smarter path: ...



Here, we study four architectures for co-packaged optical interfaces using either single- or multi-wavelength light sources that can be either external to or integrated with the optical interfaces.



Two startups are quietly working on a breakthrough that could redefine how AI systems scale: ☐☐ Lumotive ☐☐ Neurophos. And at the heart of this innovation is something that once sounded like...

Contact Us

For more information, pricing, or custom solutions, please contact us:

Website: <https://indzawo.co.za>

Email: sales@indzawo.co.za

Phone: +27 71 296 8473

Address: 22 Quantum Street, Midrand, 1685, Gauteng, South Africa

This document is for informational purposes only. Specifications subject to change without notice.

