

## Direct Burial of Optical Cable in Duct on Balcony

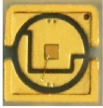


### Overview

Direct buried fiber optic cable is designed to be installed directly into the soil without additional conduit protection. Match trench method with the correct underground fiber structure (GYTS, GYTA53, GYTY53, micro-duct). Selecting the wrong cable type for a given deployment environment (duct, direct burial, or aerial) can lead to installation headaches, premature failures, and soaring long-term maintenance costs. FTTH deployment is a ground game, and the outdoor cable is its core.



## Direct Burial of Optical Cable in Duct on Balcony



Our products are designed to provide clear solutions to the specific challenges of duct, direct burial, and aerial environments, giving you the ...



An important decision-making factor to consider is whether or not to duct fiber optic cable directly or encase the cable in a conduit. Having outlined the two strategies, one can easily note some ...



As an infrastructure development professional, I often get asked about the pros and cons of direct buried fiber versus laying cable through a duct system.



As a professional direct buried fiber optic cable manufacturer & supplier, we specialize in designing, manufacturing direct buried fiber optic cable, and providing customized services for our customers



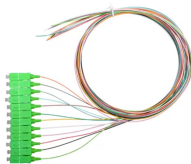
In the absence of duct infrastructure, cables can be buried directly into the ground in a trench or using a vibratory plow.



Compare direct buried and duct fiber optic cable installation methods, cost factors, protection levels, and long-term maintenance considerations.



In the absence of duct infrastructure, cables can be buried directly into the ground in a trench or using a vibratory plow.



Confidently choose between direct burial, duct, trough and micro-duct for your underground fiber project. This practical guide covers cable structures, ...



This guide explains the common cable constructions, when to choose direct-burial, a practical installation workflow, and the best practices that minimize downtime and future repair costs.



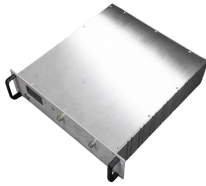
Personnel feeding cable into a feed-chute must make sure that they do not position themselves inside a cable loop. Hearing protection may be required by vehicle operators. Pre-ripping provides a safety ...



Our products are designed to provide clear solutions to the specific challenges of duct, direct burial, and aerial environments, giving you the confidence that your physical network layer is ...



Recommended technical requirements are detailed by reference to IEC 60794-3-11 on outdoor optical fibre cables for duct, directly buried, and lashed aerial applications. Changes and ...



Learn the differences between aerial, duct and direct burial fiber cable installations and how to choose the right cable for outdoor networks.

## Contact Us

For more information, pricing, or custom solutions, please contact us:

Website: <https://indzawo.co.za>

Email: [sales@indzawo.co.za](mailto:sales@indzawo.co.za)

Phone: +27 71 296 8473

Address: 22 Quantum Street, Midrand, 1685, Gauteng, South Africa

This document is for informational purposes only. Specifications subject to change without notice.

