

Distance of distribution box from national standard

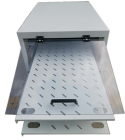


Overview

This chart guides how close workers can safely get to energized equipment based on system voltages and other factors, ensuring compliance with safety standards such as NFPA 70E. The NEC, published by the National Fire Protection Association, is the baseline safety standard for electrical installations across all 50 states, though local jurisdictions often adopt it with modifications. 1 As of early 2026, 25 states enforce the 2023 edition while 20 others still operate under. Reference NESC Rule 234E for Diving platforms, water slide, or other pool A objects greater than 8 feet in height. Vertical clearance does not apply to neutral, comm, grounded guy, or TPX that are 10 feet or more from edge of pool, diving platform, slide, or pool objects. Dedicated space: The space equal to the width and depth of electrical equipment in addition to the space extending. To re-cap Article #1 from March 5th and as required by OSHA, NFPA and the NEC: "working space around electrical enclosures or equipment shall be adequate for conducting all anticipated maintenance and operations safely, including sufficient space to ensure the safety of personnel working during. It focuses on the clearance requirements for electrical gear and panels as outlined in the National

Electrical Code (NEC) 2023 edition. Postal Service™ is responsible for establishing the method or “mode” of delivery for all new developments—both residential and commercial. The mode of delivery includes the following: Type of mailbox you will use.

Distance of distribution box from national standard



As demonstrated in this guide, the NEC 2023 provides specific and detailed standards for electrical gear and panel clearances that enhance safety during normal operation, maintenance, and ...



Minimum clearances are established for work spaces in front of high voltage - electrical equipment such as switchboards, control panels, switches, circuit breakers, switchgear and motor controllers. These ...



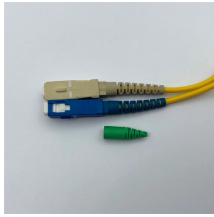
Reference NESC Rule 234E for Diving platforms, water slide, or other pool A objects greater than 8 feet in height. Vertical clearance does not apply to neutral, comm, grounded guy, or TPX that are 10 feet ...



You can't install feeder and branch-circuit conductors in the same raceway, cable, handhole enclosure, or underground box with service conductors [230.7]. Doing this would bypass the feeder or branch ...



Cluster boxes must be safely located so that customers are not required to travel an unreasonable distance to obtain their mail and so there is sufficient access to mailbox locations with adequate ...



The minimum approach distance chart defines safe working distances to prevent arc flash injuries. Based on NFPA 70E and OSHA standards, it helps protect electrical workers by specifying limits by ...



Every electrical panel, breaker box, meter base, and service disconnect needs a clear working zone in front of it so that someone can safely operate the equipment or respond to an ...



Side clearance: There should be a minimum of 30 inches of clearance from the sides of all electrical equipment, but in no case less than the width of the equipment itself. This is referred to as the side-to ...



Section E3405.5 of the International Residential Code prohibits the location of electrical panels from being installed in the following locations: Over the Steps of a Stairway. The reasons for this are obvious.



Regardless of the wiring method, box fill calculations apply equally to all cables. Use our conduit fill calculator to determine the calculation in your specific case.

Contact Us

For more information, pricing, or custom solutions, please contact us:

Website: <https://indzawo.co.za>

Email: sales@indzawo.co.za

Phone: +27 71 296 8473

Address: 22 Quantum Street, Midrand, 1685, Gauteng, South Africa

This document is for informational purposes only. Specifications subject to change without notice.

