

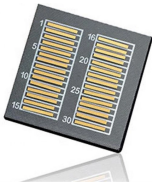
Distribution Box Guide Rail Pads



Distribution Box Guide Rail Pads



GANTREX ® MK6 pads have been specially designed for the soft mounting of crane rails, being mounted either continuously on steel, or mixed on concrete and steel, along with GANTREX® fixing ...



Lightweight fiberglass box pads for single-phase and three-phase transformers. Available products include our HL Series of compression molded fiberglass and our FBP and FSG-RT Series of spray ...



We have been an approved direct distributor to Network Rail for over 7 years and can comply with industry standards. Our sales team are familiar with the Pads approval system and all our products ...

Motor protection controller



Choose from our selection of ball bearing carriages and guide rails, material guiding hardware for conveyors, and more. Same and Next Day Delivery.



To allow a better dynamic load distribution within the pad, our in-house R& D department has developed a new and patented shape for our RailLok™ Pads. This specific shape allows a better distribution of ...



A wide range of Network Rail PADS Approved Dis Boxes & GRP Enclosure Systems for many Signalling Applications



Cubis is Europe's leading manufacturer of network access chamber and ducting systems, used in the construction of infrastructure networks for rail, telecoms, water, construction and power markets.



When a gas line crosses under an enclosure such as a pedestal, pad mount transformer or splice/pull box, it will be sleeved in a section of polyethylene or schedule 40 PVC.



Getzner elastic rail pads possess a defined stiffness and demonstrably increase the elasticity of the track superstructure. Improved load distribution results in a more comfortable ride and less wear and tear ...



To cover all types of rail systems, we developed a range of RailLok™ pads designed for soft-mount installations where rails are laid on continuous and discontinuous supports available in different pad ...



Looking for a rail part? Got a Pads Number? The Rowse Quick Search tool allows you to quickly find the part you need and request a quote.



This document shows the installation instructions of in-out automatic pad-mounted interrupters for underground distribution lines.



When it comes to Conveyor Guide Rails & Accessories, you can count on Grainger. Supplies and solutions for every industry, plus easy ordering, fast delivery and 24/7 customer support.

Contact Us

For more information, pricing, or custom solutions, please contact us:

Website: <https://indzawo.co.za>

Email: sales@indzawo.co.za

Phone: +27 71 296 8473

Address: 22 Quantum Street, Midrand, 1685, Gauteng, South Africa

This document is for informational purposes only. Specifications subject to change without notice.

