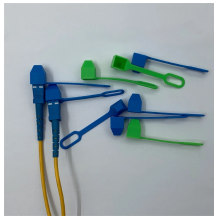


Do all construction sites need electrical distribution boxes



Do all construction sites need electrical distribution boxes



From Modular Switch Boards to Quick Connect Docking Panels, we provide reliable power exactly where and when you need it, ensuring your construction projects are powered without interruption. ...



The standard sets out minimum requirements for the design, construction and testing of electrical installations that supply electricity to appliances and equipment on construction and demolition sites, ...



Select the right power distribution box by matching site power needs, safety standards, and future expansion for reliable construction site performance.



This document contains information relating to the placement of electric underground equipment and enclosures. This includes pad-mount, subsurface, and vault installations with or without equipment.



Electrical installations at construction sites require specialized attention due to unique standards and legal obligations. This article aims to provide valuable insights into the electrical works crucial for ...



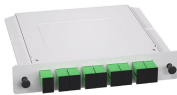
Construction sites require temporary power distribution systems that can handle multiple tools, lighting, and equipment simultaneously. Your power inlet box connects generators to spider ...



work requires electrical power for many purposes. However, exposure to weather, frequent relocation, rough use and other conditions not normally encountered with conventional wiring systems ...



A construction power distribution box is an essential part of a construction site as it ensures that the power needs of all the equipment and machinery on the site are met.



Select the right power distribution box by matching site power needs, safety standards, and future expansion for reliable construction site performance.



Every construction site relies on one essential thing to keep operations moving— power. Whether it's lighting, heavy-duty tools, or on-site offices, electricity needs to be distributed safely and efficiently. ...



Construction projects need rugged temporary power for tools, lighting, pumps, lifts, and site offices. A construction electrical panel with CEE sockets and elevated mounting helps reduce ...

Contact Us

For more information, pricing, or custom solutions, please contact us:

Website: <https://indzawo.co.za>

Email: sales@indzawo.co.za

Phone: +27 71 296 8473

Address: 22 Quantum Street, Midrand, 1685, Gauteng, South Africa

This document is for informational purposes only. Specifications subject to change without notice.

