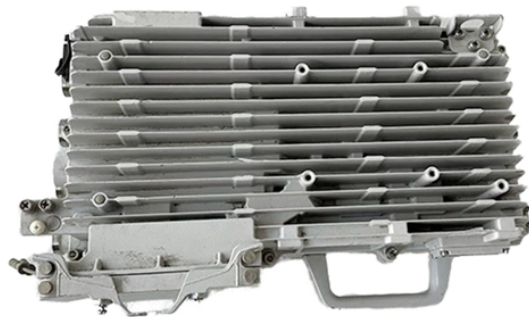


Do industrial switches have 36 ports



Do industrial switches have 36 ports



The ONV-IPS36036PFM is a 10G uplink managed industrial PoE switch independently developed by ONV. It has 24*10/100/1000Base-T adaptive RJ45 ports and 8*100/1000Base-X SFP fiber ports and ...



H3C IE4300 series industrial switches offer extensive industrial environmental compliance and certifications, and can be widely used in public transport, traffic management, smart building, and ...



Moxa provides a wide range of industrial Ethernet switches that feature industrial-grade reliability, network redundancy, strengthened security, easy management, and competitive price-to ...



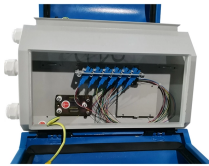
The Cisco IE3500 Rugged Series are designed with features that enable the industrial network infrastructure to seamlessly accommodate machine vision use cases, AI-driven analysis, ...



This is a L3 1G/10G managed Industrial Ethernet switch, with 24 x 100/1000M SFP ports + 8 x 10/100/1000M RJ45 ports (Combo) + 4 x 1G/10G (SFP+) Ports.



The Westermo range of industrial PoE switches is designed to meet either the 802.3af standard or the 802.3at Power over Ethernet (PoE) Plus standard for high-power applications.



Unmanaged switches are the simplest active network components for fast networking. They are suitable as plug-and-play devices, require no configuration and are still customisable. They use basic ...



10G Managed Ethernet Switch /Router provides high density, high ...



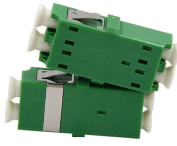
Industrial unmanaged switches from Phoenix Contact feature variable numbers of ports and a narrow design. We provide unmanaged switches with a variety of functions, depending on the application.



The ONV-IPS56036FM is a 10G uplink managed industrial Ethernet fiber switch independently developed by ONV. It has 16*10/100/1000Base-T adaptive RJ45 ...



Unmanaged and managed switches in various designs are available to enhance performance and security. These robust switches are designed for industrial use and are fully compliant with IEEE ...



Our rugged switches have added hardware reinforcement and software features that make them ideal for deployments in hostile environments, as well as operational technology (OT) industrial and ...



Our switches are built for high network flexibility, cyber security and durability and are suitable for use in mission-critical environments.

Contact Us

For more information, pricing, or custom solutions, please contact us:

Website: <https://indzawo.co.za>

Email: sales@indzawo.co.za

Phone: +27 71 296 8473

Address: 22 Quantum Street, Midrand, 1685, Gauteng, South Africa

This document is for informational purposes only. Specifications subject to change without notice.

