

## Dominic PoE Switch Types



### Overview

3bt standard brought about PoE++, which includes two types: Type 3 delivers up to 51W using two or four twisted pairs, and Type 4 offers up to 71W over four twisted pairs, supporting higher power consumption devices. What is a PoE Switch?

In 2018, the IEEE 802. What is a PoE Switch?

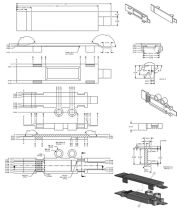
With D-Link PoE switches, you can take advantage of the latest advancements in PoE technology to power and manage a wide range of devices and unlock new opportunities for innovation within your business. Whether you're looking to improve your network infrastructure, streamline installation and. How to Check PoE Standards for Reolink PoE Cameras?

What is PoE?

PoE switches (Type 1) comply with the IEEE 802. The standard specifies that PSEs can supply up to 15. This technology allows for the transmission of both

data and power over a single cable. Power is injected into an Ethernet cable at a voltage between 44 and 57 volts DC.

## Dominic PoE Switch Types



In today's blog, we'll explain what a PoE switch is and how it powers devices through one Ethernet cable. We'll also look at the different types of PoE switches, their benefits, and how they can ...



Power over Ethernet (PoE) switches are a revolutionary technology that enable devices to be powered and network-connected over a single Ethernet cable.



There are different types of PoE switches, including PoE (IEEE 802.3af), which supplies up to 15.4W per port, PoE+ (IEEE 802.3at), which provides up to 30W per port, and PoE++ (IEEE 802.3bt), capable ...



PoE provides an efficient, easy-to-install, and cost-effective way to operate a network. However, with all the available choices on the market, finding the right PoE switch for a particular system can be a ...



In today's blog, we'll explain what a PoE switch is and how it powers devices through one Ethernet cable. We'll also look at the ...



These considerations will determine the type of PoE switch and device requirements such as data rate, power consumption, port density, benefits of managed and unmanaged switches, and the need for ...



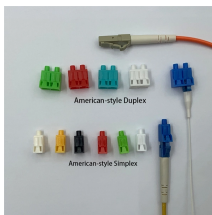
This article aims to clarify the distinctions between PoE, PoE+, and PoE++ switches and their respective applications, helping you make an informed choice for your network needs.



There are two types of PoE switches available for installation commercial-grade and industrial-grade which are designed to meet the specific needs of different environments. The main difference ...



PoE Types and Classes exist to ensure the components within a PoE network can negotiate, deliver and receive the correct amount of power. In contrast, Remote Power (RP) ...



Learn about different types of PoE switches, their advantages, selection tips, and application scenarios. Find the right PoE switch to power and connect your network efficiently.



Learn key differences between PoE vs PoE+ vs PoE++. Compare power output, device compatibility, and use cases to find the best PoE switch for your needs.

Different Types of Poe Standards For Poe SwitchesPoe vs PoE+ vs PoE++  
ComparisonQuick Comparisons of The Poe, PoE+, and PoE++Which Poe Switch Is The  
Best For You?Reasons to Consider When Upgrading Your Poe SwitchAdditional Factors  
to Consider When Choosing A SwitchBonus Tips: How to Check Poe Standards For  
Reolink Poe CamerasFAQsConclusionPower over Ethernet (PoE) is a technology that  
enables the transmission of electric current and data simultaneously over Ethernet  
cables, eliminating the need for separate power cables. This section will provide a  
brief overview of the three main PoE standards - Type 1, Type 2, and Type 3 -  
developed by IEEE and explain the key differences betwe...See more on reolink  
Missing: Dominic PoEMust include: Dominic PoE.b\_imgcap\_alttitle p  
strong,.b\_imgcap\_alttitle .b\_factrow strong{color:#767676}#b\_results .b\_imgcap\_altit  
le{line-height:22px}.b\_imgcap\_alttitle{display:flex;flex-direction:row-  
reverse;gap:var(--mai-smtc-padding-card-nested-default)}.b\_imgcap\_alttitle  
.b\_imgcap\_img{flex-shrink:0;display:flex;flex-direction:column}.b\_imgcap\_alttitle  
.b\_imgcap\_main{min-width:0;flex:1}.b\_imgcap\_alttitle  
.b\_imgcap\_img>div,.b\_imgcap\_alttitle .b\_imgcap\_img a{display:flex}.b\_imgcap\_alttitle  
.b\_imgcap\_img img{border-radius:var(--mai-smtc-corner-card-  
default)}.b\_imagePair.square\_s> ner{width:50px}.b\_imagePair.square\_s{padding-  
left:60px}.b\_imagePair.square\_s> ner{margin:2px 0 0 -60px}.b\_imagePair.square\_s.r  
everse{padding-left:0;padding-right:60px}.b\_imagePair.square\_s.reverse>  
ner{margin:2px -60px 0 0}.b\_ci\_image\_overlay:hover{cursor:pointer}  
sightsOverlay,#OverlayIFrame.b\_mcOverlay sightsOverlay{position:fixed;top:5%;left:  
5%;bottom:5%;right:5%;width:90%;height:90%;border:0;border-radius:15px;margin:0  
;padding:0;overflow:hidden;z-index:9;display:none}#OverlayMask,#OverlayMask.b\_  
mcOverlay{z-index:8;background-  
color:#000;opacity:.6;position:fixed;top:0;left:0;width:100%;height:100%}Planet  
Technology USA

## Contact Us

For more information, pricing, or custom solutions, please contact us:

Website: <https://indzawo.co.za>

Email: [sales@indzawo.co.za](mailto:sales@indzawo.co.za)

Phone: +27 71 296 8473

Address: 22 Quantum Street, Midrand, 1685, Gauteng, South Africa

This document is for informational purposes only. Specifications subject to change without notice.

