

## Dpi network security devices



### Overview

In addition to using DPI for the security of their own networks, governments in North America, Europe, and Asia use DPI for various purposes such as and. Many of these programs are classified. The Chinese government uses deep packet inspection to monitor and censor network traffic and content that it claims is harmful to Chinese citizens or state interests. This material includes pornography, infor.



## Dpi network security devices



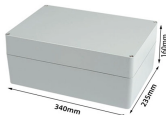
Deep Packet Inspection (DPI) is an advanced method of analyzing traffic being sent over a network. Find out why DPI is essential for network management and security and how to test DPI-enabled ...



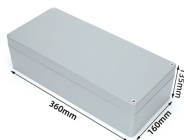
What is DPI (Deep Packet Inspection)? DPI is a type of data processing used by network devices (like firewalls, routers, or intrusion detection systems) to inspect the actual contents of data packets as ...



Explore what DPI is, how it works, and why it's vital for network security. Learn key functions, OSI layers, firewalls, and its role in NDR.



DPI identifies applications, protocols, and content, helping systems block threats, trigger alerts, reroute traffic, or log activity for analysis. It also produces lightweight, packet-derived metadata that is critical ...



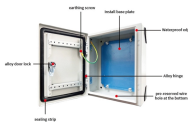
Common applications of deep packet inspection include network security, traffic analysis and optimization, and compliance monitoring. It is also used in network forensics, intrusion detection, ...



Deep packet analysis is a network methodology that is particularly useful in firewalls. Find out what it is and the tools to help protect your network.



Learn what a DPI Firewall is, how Deep Packet Inspection works, why it's essential for security, and how it detects apps, threats, VPNs, and encrypted traffic.



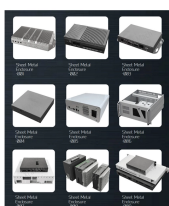
A comprehensive comparison of various network traffic classifiers, which depend on deep packet inspection (PACE, OpenDPI, 4 different configurations of L7-filter, NDPI, Libprotoident, and Cisco ...



OverviewBy governmentsBackgroundAt the enterprise levelAt network/Internet service providersNet neutralityHardware and softwareSee also



Learn what deep packet inspection (DPI) is and how DPI works to block malware and stop data leaks. Discover how the FortiGate NGFW uses DPI to identify threats.



A DPI sensor streamlines investigations and improves time-to-detection for network forensics and threat hunting by capturing and storing detailed traffic information in a database where it can be rapidly and ...

## Contact Us

For more information, pricing, or custom solutions, please contact us:

Website: <https://indzawo.co.za>

Email: [sales@indzawo.co.za](mailto:sales@indzawo.co.za)

Phone: +27 71 296 8473

Address: 22 Quantum Street, Midrand, 1685, Gauteng, South Africa

This document is for informational purposes only. Specifications subject to change without notice.

