

Indzawo Optic Connect

Dpi network security equipment manufacturers



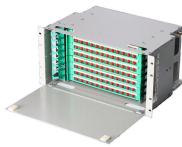
Dpi network security equipment manufacturers



Dots per inch (DPI or dpi) is a measure of spatial printing, video or image scanner dot density, in particular the number of individual dots that can be placed in a line within the span of 1 inch (25.4 mm).



At a DPI of 800 your mouse will "measure" 800 points of movement per inch that you move your mouse; at 1600 DPI it will measure 1600 points of movement per inch, making the cursor ...



Analyze the top 6 DPI companies based on VMR proprietary data. Compare Cisco, Allot, and Sandvine across 400G scalability, encrypted traffic intelligence (ETI), and market share.



DPI, which stands for Dots Per Inch, is the measure of a mouse's sensitivity, determining how far the cursor moves on the screen for each inch the mouse moves physically.



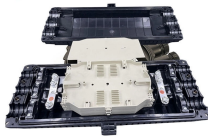
Deep packet inspection (DPI) is a type of data processing that inspects in detail the data being sent over a computer network, and usually takes action by blocking, re-routing, or logging it ...



Cisco Systems: Offers scalable DPI solutions integrated with network security and management tools. Fortinet: Provides DPI features within its FortiGate firewalls, emphasizing ...



On a digitally printed image, DPI refers to how many ink droplets per inch the printer uses to create documents. 600 is a pretty common DPI for home printers, but higher-end printers may use ...



DPI software can further reinforce network security and enhance network management when integrated into gateways, such as wireless access points (WAP), and SD-WAN solutions for both telco and ...



Integrate our DPI engine into your firewall, router, or SD-WAN solution with direct support from our engineers. We ensure seamless performance, low latency, and OEM-ready deployment.



Measure the true DPI of your mouse, accurately calculate sensor accuracy, and discover your DPI even if your mouse driver lacks the necessary settings.



eDPI Calculator This eDPI calculator takes the DPI and sensitivity as input to quickly compute the effective dots per inch (eDPI). You can use this eDPI calculator with a range of video games, ...



Professional online mouse DPI testing tool that accurately measures mouse sensitivity, precision, and DPI calibration. Perfect for gamers, designers, and professionals seeking optimal mouse ...



DPI stands for Dots Per Inch. In the simplest of terms, it is the measurement of a mouse's cursor sensitivity relative to physical movement on a surface. This sensitivity, in computing terms,...



As of my last knowledge update in September 2021, there are several manufacturers of Deep Packet Inspection (DPI) equipment, including some from China and other countries.



Deep Packet Inspection Vendors & products listing provides guide/links for buyers, decision makers, telecom sector professionals and technology enthusiast in general.



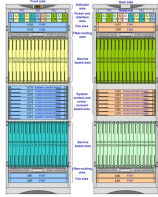
Deep packet analysis is a network methodology that is particularly useful in firewalls. Find out what it is and the tools to help protect your network.



Mouse DPI, or dots per inch, is a measurement used to determine the sensitivity of a mouse. This is important for gamers or other users that need precise mouse movements to achieve ...



Explore the top companies leading the Deep Packet Inspection Market and driving innovations in this dynamic and evolving industry.



Accurately measure your mouse DPI (dots per inch) by moving your mouse a specified distance. Get precise DPI measurements for gaming and productivity.



Whether you are looking to ensure network and application observability, optimize end-user experience, reinforce cybersecurity, or prevent DDoS attacks, NETSCOUT solutions can help. Learn more from ...

Contact Us

For more information, pricing, or custom solutions, please contact us:

Website: <https://indzawo.co.za>

Email: sales@indzawo.co.za

Phone: +27 71 296 8473

Address: 22 Quantum Street, Midrand, 1685, Gauteng, South Africa

This document is for informational purposes only. Specifications subject to change without notice.

