

Electrical distribution box on architectural drawings



Electrical distribution box on architectural drawings



Delta Electric is a San Jose-based electrical contracting firm operating since 1982. The residential and commercial electricians have three decades of industry experience. They handle ...



Call us today for all your electrical needs at 800-860-1458. Our electricians are stationed throughout the U.S., ready to help 24 hours a day with all your electrical and lighting requirements.



From switches and sockets to lighting fixtures and distribution boards, these symbols form the language of electrical drawings - allowing engineers, contractors, and technicians to ...



We offer a full range of residential & commercial electrical services with a fully CSLB Licensed Electrical Company providing cost effective solutions for you and your home or business. Ranging from ...



Electrical plans show where outlets, switches, lighting, and other electrical elements should be placed within a space. In this article, you'll find a collection of electrical plan examples for ...



Trusted electricians in California and Las Vegas for residential, commercial, and EV charger installation. Contact us today to schedule reliable electrical service.



This is a review for a electricians business in San Jose, CA: "I recently had a Tesla Wall charger installed at my home and couldn't be happier with the entire experience with Electrica c everything ...



Here is the definitive list of San Jose's electricians as rated by the San Jose, CA community. Want to see who made the cut?



Looking for trusted electrical contractors near you? Our company provides professional wiring, repair, and installation services for homes in San Jose and nearby areas. Our certified electricians handle ...



Download CAD block in DWG. Main distribution panel 800 amp panel with distribution breakers automatic transfer panel base (111.81 KB)



Our Standard Power Distribution Box drawing is the essential, universal blueprint you need. This CAD file provides the complete fabrication and layout details for the most common type of ...



Download Electrical Legend CAD Block (DWG) with common electrical symbols for lighting, switches, sockets, distribution boards, and legend notes for drawings.



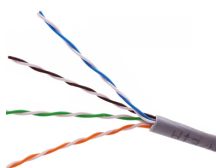
Different electrical systems such as power distribution, luminaire, voice/data, fire alarm, and security/ access control should be shown on separate plans if combining them on the same drawings would ...



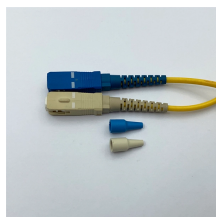
Dalcon Electric is fully prepared for any electrical installation you need. From ceiling fans to outlets, switches and lighting, we have the most modern solutions for your home or business. When it's time ...



When an electrical distribution system is too large to be shown on a single drawing, the major components and feeders should be shown on a single drawing. Additional one-line diagrams should ...



Our C-10 licensed team handles residential and commercial work including panel upgrades, EV charger installation, recessed lighting, whole-house rewiring, generator service, and solar. We pull permits, ...



The electrical CAD blocks category provides professional DWG files for wiring layouts, panel diagrams, and electrical system planning. These AutoCAD files are designed for engineers, contractors, and ...



Your electrical panel is the heart of your home's power distribution, and its location and symbol must be clearly marked on every electrical plan. Since all circuits originate from this central ...



Every engineering office uses their own set of electrical symbols; however, the symbols below are fairly common across many offices. Refer to the legend sheet in your set of plans for ...

Contact Us

For more information, pricing, or custom solutions, please contact us:

Website: <https://indzawo.co.za>

Email: sales@indzawo.co.za

Phone: +27 71 296 8473

Address: 22 Quantum Street, Midrand, 1685, Gauteng, South Africa

This document is for informational purposes only. Specifications subject to change without notice.

