

## Electrical power supply to the small busbar at the top of the high-voltage switchgear

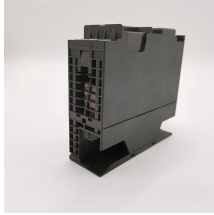


### Overview

With cross-tie disconnecter “DT”, the power of line A can be switched to branch A1, bypassing the busbar. The busbars are then accessible for maintenance. Each branch requires only one circuit-breaker, and yet each breaker can be isolated without interrupting the power . Among them, the small busbar at the top of the high-voltage cabinet, although small in size, plays a crucial role. They are also used to connect high voltage equipment at. A busbar electrical system consists of a conductive metallic bar or a group of bars (typically made of copper or aluminium) designed to carry and distribute electrical current within a system. Account is taken of the need to isolate parts of the installations for purposes of cleaning and maintenance, and also of. In the power distribution, except for the line, we use the most is the switchgear, the structure of the switchgear is generally similar, mainly divided into busbar room, circuit breaker room, secondary control room (instrument room), feeder room, and there is generally steel plate isolation between. The common models for 10KV high voltage switchgear include the KYN28-12 medium-

voltage switchgear and the XGN2-12 fixed high-voltage switchgear. In the KYN28 model, the circuit breaker is.

## Electrical power supply to the small busbar at the top of the high-v



Double Breaker/Double Bus Scheme The double breaker/double bus (DB/DB) scheme is one of the most robust high-voltage substation arrangements used where continuity of service is critical.



In modern power distribution infrastructure, the busbar electrical system has emerged as a critical component for ensuring efficient, reliable, and safe transmission of electrical energy.



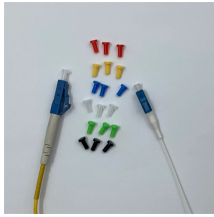
In modern power distribution infrastructure, the busbar electrical system has emerged as a critical component for ensuring efficient, reliable, and ...



Read real reviews and see ratings for Los Angeles, CA electricians for free! This list will help you pick the right electricians in Los Angeles, CA.



Dunamis Electric Inc provides licensed residential and commercial electrical services in Los Angeles. Panel upgrades, EV charger installation, repairs, rewiring, troubleshooting, and emergency ...



Here is the definitive list of Los Angeles's electricians as rated by the Los Angeles, CA community. Want to see who made the cut?



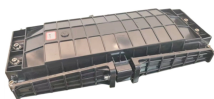
Find and connect with the 8 Best Electricians in Los Angeles, CA. Hand picked by an independent editorial team and updated for 2026.



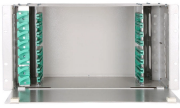
Discover top-notch electrical services with Louie Electric in Los Angeles. From residential wiring to commercial electrical solutions, our certified electricians ensure safety and efficiency. Contact us for ...



The busbar's material composition and cross-sectional size determine the maximum current it can safely carry. Busbars can have a cross-sectional area of as little as 10 square millimetres (0.016 sq in), but electrical substations may use metal tubes 50 millimetres (2.0 in) in diameter or more as busbars. Aluminium smelters use very large busbars to carry tens of thousands of amperes to the electrochemical cells that produce aluminium



The small busbar at the top of the high-voltage cabinet specifically refers to the busbars used for signal transmission and auxiliary power supply between various components inside the high-voltage ...



Electrician in Los Angeles California - Hoffer Electric is a trusted electric company in Los Angeles, specializing in residential and commercial electrical services. We provide expert solutions, including ...



Learn how to design efficient substation busbar systems with calculations, examples, and best practices.



The circuit configurations for high- and medium-voltage switchgear installations are governed by operational considerations. Whether single or multiple busbars are necessary will ...



Also called power supply cabinet or power distribution cabinet, it is a device used to distribute electric energy (from the bus bar to each outlet), and generally installed with circuit ...



Identify which current transformer or voltage transformer is providing the power (current source, voltage source), and understand how they affect DC circuits, along with the relays that reflect ...



We've built a company of highly experienced, certified electricians in Los Angeles to serve your electrical needs whether it be in your home or workplace. There's plenty of competition throughout Los ...



We offer a multitude of electrical services such as lighting repairs, electrical home safety, outlets and dimmer repairs, troubleshooting whole home generators and more! No matter what electrical service ...



At extra high voltages (more than 300 kV) in outdoor buses, corona discharge around the connections becomes a source of radio-frequency interference and power loss, so special connection fittings ...



We dispatch licensed electricians across Los Angeles for same-day and emergency needs. We troubleshoot the issue, explain the fix in plain terms, and give pricing options before work ...



Best Electricians in Los Angeles, CA - Last Updated May 2026 - Ready Electric, Alex & Alex Electrical Services, Josh the Honest Electrician, MH Electric, Advance Electrical Service, Optimum Electrical, ...



Electrical busbars function as low-resistance conductors within high voltage cabinets, allowing power to be distributed safely and evenly. Their streamlined design reduces wiring complexity, minimizes ...



Also called the power receiving cabinet, it is a device used to receive electrical energy from the power grid (from the incoming line to the bus bar), and is generally equipped with components such as ...

## Contact Us

For more information, pricing, or custom solutions, please contact us:

Website: <https://indzawo.co.za>

Email: [sales@indzawo.co.za](mailto:sales@indzawo.co.za)

Phone: +27 71 296 8473

Address: 22 Quantum Street, Midrand, 1685, Gauteng, South Africa

This document is for informational purposes only. Specifications subject to change without notice.

